

DEUBLIN

1116 Series "Closed Seal" Rotating Unions for Continuous Coolant Service

- Single passage for coolant or MQL
- Closed seals for transfer line and similar applications
- Full-flow design has no obstructions to trap swarf or debris
- Bearing-supported with threaded rotor for easy installation
- Deep groove radial ball bearings for smooth operation
- Labyrinth system and large vents to protect ball bearings
- Balanced mechanical seals made from silicon carbide for long life even under difficult operating conditions
- Anodised aluminium housing resists corrosion

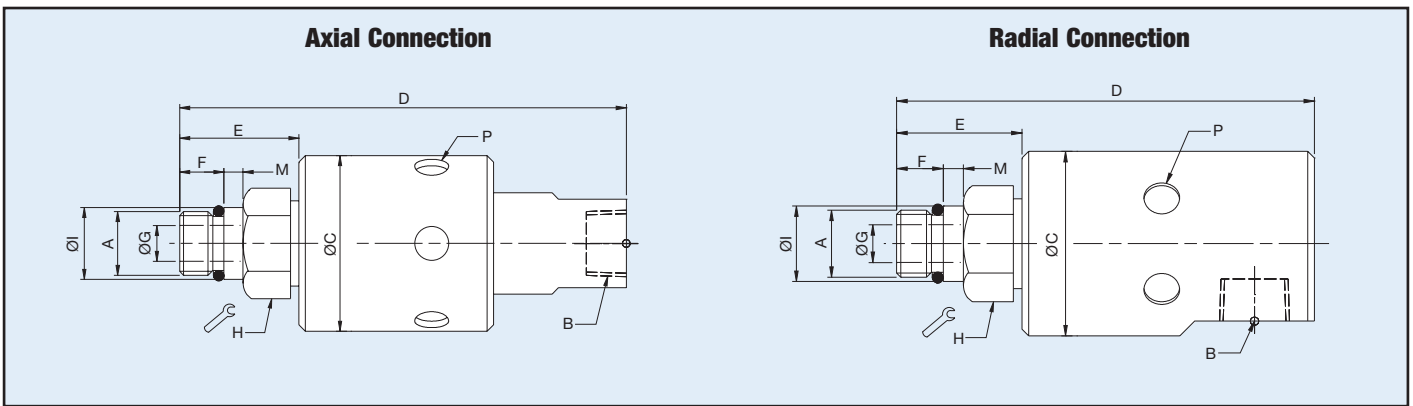
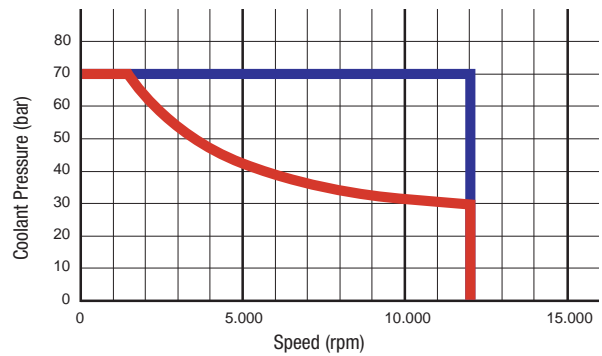


Operating Data

| | | |
|------------------|--|------------|
| Media | Water-based Coolant MQL (oil mist) up to 10 bar (145 psi) | |
| Filtration | ISO 4406 Class 17/15/12, max. 60 micron | |
| Max. Speed | 12.000 min ⁻¹ | 12,000 rpm |
| Max. Pressure | 70 bar | 1,015 psi |
| Max. Flow | 82 l/min | 21.6 gpm |
| Max. Temperature | 71 °C | 160 °F |



DO NOT RUN DRY



| | Ordering Number | B Supply Connection | C Overall Diameter | D Overall Length | P Vent Size Ø (6 x 60°) | A Rotor Connection | E Rotor Length | F Thread Length | G Bore Diameter | H Across Flats | I Pilot Diameter | M Pilot Length |
|--------|-----------------|---------------------|--------------------|------------------|-------------------------|--------------------|----------------|-----------------|-----------------|----------------|-------------------|----------------|
| Axial | 1116-048-463 | ¼ NPT | 44 | 112 | 9 | M16 x 1.5 LH | 30 | 11 | 9 | 24 | 17.993 / 17.988 | 5 |
| | 1116-485-463 | G ¼ | 44 | 112 | 9 | M16 x 1.5 LH | 30 | 11 | 9 | 24 | 17.993 / 17.988 | 5 |
| | 1116-610-463 | G ¾ | 44 | 112 | 9 | M16 x 1.5 LH | 30 | 11 | 9 | 24 | 17.993 / 17.988 | 5 |
| Radial | 1116-090-064 | ¾ NPT | 44 | 106 | 9 | ⅝-18 UNF RH | 33 | 14 | 9 | 15/16" | 0.6555" / 0.6553" | 5 |
| | 1116-090-463 | ¾ NPT | 44 | 102 | 9 | M16 x 1.5 LH | 30 | 11 | 9 | 24 | 17.993 / 17.988 | 5 |
| | 1116-516-463* | G ¾ | 44 | 102 | 9 | M16 x 1.5 LH | 29 | 11 | 9 | 24 | 17.993 / 17.988 | 5 |
| | 1116-555-463 | G ¾ | 44 | 102 | 9 | M16 x 1.5 LH | 29 | 11 | 9 | 24 | 17.993 / 17.988 | 5 |
| R. | 1116-987-463** | G ¾ | 44 | 102 | 9 | M16 x 1.5 LH | 30 | 11 | 9 | 24 | 17.993 / 17.988 | 5 |

* Also allowed for compressed air and defined dry run cycles with reduced operating data. For further information please contact DEUBLIN.

** Also allowed for operation with hydraulic, compressed air and defined dry run cycles with reduced operating data. For further information please contact DEUBLIN.

【信德迈科技(北京)有限公司是美国Deublin杜博林旋转接头正式授权十年北方地区最大代理商】

产品选型资料及更详细产品介绍请点击：<http://www.cnmec.net>