



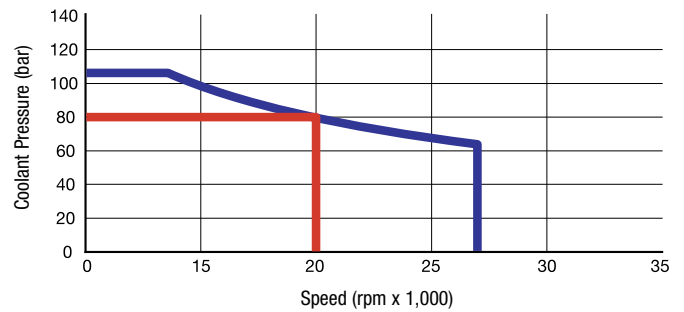
DEUBLIN

Rotating Unions Flange Design Bore-Mounted for Various Media

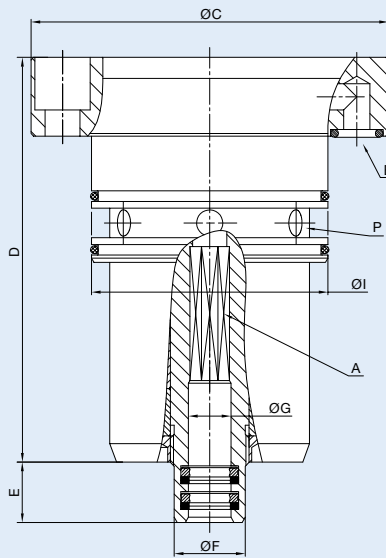
- Single passage available with all sealing technologies
- Accepts up to 19 mm of drawbar movement
- Full-flow design has no obstructions to trap swarf or debris
- Labyrinth system and large vents to protect ball bearings
- Balanced mechanical seals made from silicon carbide for long life even under difficult operating conditions
- Anodised end cap and stainless steel housing and rotor resist corrosion
- Dry run capability depending on sealing technology and materials possible

Operating Data

Sealing Technology (depending on model) AutoSense™, Closed Seal, Pop-Off™
 Media (depending on model) Coolant – water based;
 Cutting Oil
 Compressed Air up to 10 bar, up to 145 psi
 MQL (oil mist) up to 10 bar, up to 145 psi
 Max. Speed 27,000 min⁻¹ 27,000 rpm



Flange Connection



Ordering Number	Sealing Technology	B Supply Connection	C Overall Diameter	D Overall Length	P Drain Size Ø	A Rotor Connection	E Rotor Length	F Rotor OD	G Bore Diameter	I Pilot Diameter	Max. Speed (rpm)	Max. Pressure (bar)
1108-310-304	Closed Seal	Ø5 Flange	84	84	4x Ø5	Hexagon 11	34	24	14.1H7	49 f7	20,000	80
1114-935-793	AutoSense™	Ø5 Flange	68	77	6x Ø5	Octagon 7.4 D10	11.5	13.5	8.1F9	45 h7	27,000	105