



# DEUBLIN

## F Series 5" Water Union

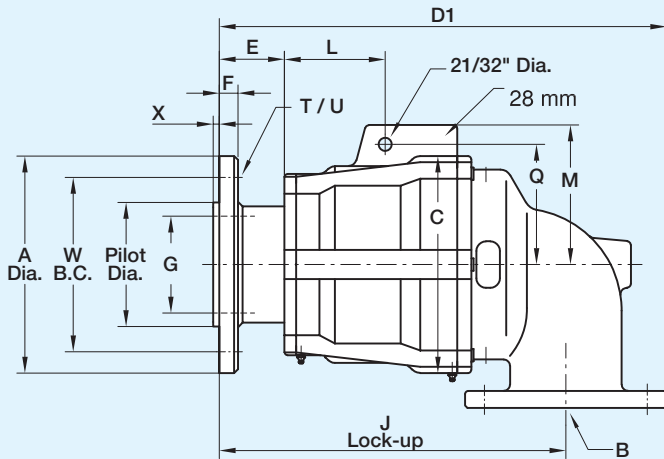
- monoflow and duoflow design
- self-supported rotating union
- balanced mechanical seal
- seal combination:  
Carbon Graphite/Tungsten Carbide
- two widely-spaced ball bearings
- labyrinth seal protects bearings
- nickel-plated cast iron housing
- high corrosion resistant
- steel flanged rotor
- on-the-machine seal replacement capability
- inlet/outlet flange:  
standard ANSI  
optional DIN, JIS
- special designs up to 12" available upon request

### Operating Data

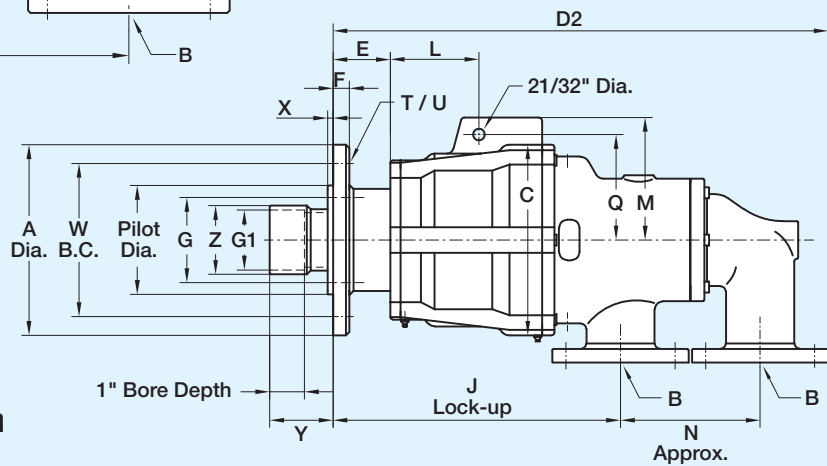
Maximum Water Pressure <sup>①</sup>	230 PSI	16 bar
Maximum Speed <sup>①</sup>	1,000 RPM	1,000/min
Maximum Temperature	250°F	>250°F consult <b>DEUBLIN</b>

① Union is designed for continuous operation at either maximum speed or maximum pressure. If operating conditions are close to maximum pressure and speed simultaneously, consult **DEUBLIN**.

### Monoflow Rotating Union



### Duoflow Rotating Union



#### Monoflow Union

B Port	Ordering No.	A	C	D1	E	F	G	J	L	M	Q	T	U	W	X	Pilot Dia.	Shpg. Wt.
5" ANSI	F127-004-200	11"	11"	23"	3 <sup>11</sup> / <sub>32</sub> "	1"	4 <sup>29</sup> / <sub>32</sub> "	17 <sup>29</sup> / <sub>32</sub> "	5 <sup>1</sup> / <sub>8</sub> "	7 <sup>3</sup> / <sub>32</sub> "	6 <sup>1</sup> / <sub>32</sub> "	6	2 <sup>3</sup> / <sub>32</sub> "	8 <sup>27</sup> / <sub>32</sub> "	5 <sup>1</sup> / <sub>16</sub> "	6.295" 6.291"	220#

#### Duoflow Union

B Port	Ordering No.	A	C	D2	E	F	G1	J	L	M	N	Q	T	U	W	X	Y	Z	Pilot Dia.	Shpg. Wt.
(2) 3" ANSI	F127-005-204-701	11"	11"	28 <sup>1</sup> / <sub>2</sub> "	3 <sup>11</sup> / <sub>32</sub> "	1"	3.480" 3.476"	16 <sup>21</sup> / <sub>32</sub> "	5 <sup>1</sup> / <sub>8</sub> "	7 <sup>3</sup> / <sub>32</sub> "	8"	6 <sup>1</sup> / <sub>32</sub> "	6	2 <sup>3</sup> / <sub>32</sub> "	8 <sup>27</sup> / <sub>32</sub> "	5 <sup>1</sup> / <sub>16</sub> "	3 <sup>21</sup> / <sub>32</sub> "	3 <sup>3</sup> / <sub>32</sub> "	6.295" 6.291"	264#