



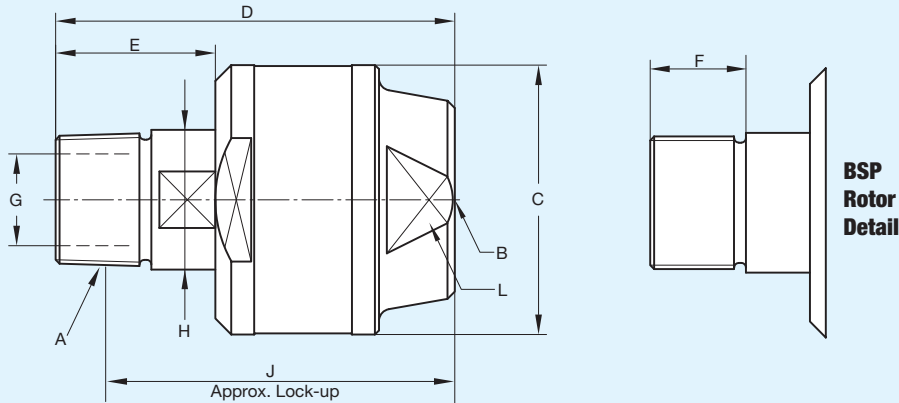
DEUBLIN

D Series High Pressure Swivel Low Speed Rotating Unions

- monoflow design
- for hydraulic oil and water
- for swivel applications and high pressure media
- steel housing and end cap
- stainless steel rotor
- self-supported rotating union
- can be adapted for other media

Operating Data

Maximum Hydraulic/Water Pressure	6,400 PSI	450 bar
Maximum Speed	20 RPM	20/min
Maximum Temperature	250°F	120°C



B Inlet Port	Ordering Number	A Rotor Connections	C	D	E	F	G Rotor Hole	H Across Flats	J Lock-up	L Across Flats	Shpg. Wt.
1/4" NPT	D8-004-214	1/4" NPT RH	1 1/16"	2 1/16"	1"	1 9/32"	9/32"	15/32"	2 5/16"	15/16"	3/4#
	D8-004-215	1/4" NPT LH									
G 1/4" (BSP)	D8-003-210	G 1/4" (BSP) RH	40	68	25	15	7	12	53	24	.3 Kg
	D8-003-211	G 1/4" (BSP) LH									
3/8" NPT	D10-004-214	3/8" NPT RH	1 3/4"	2 3/4"	1"	2 5/32"	1 3/32"	9/16"	2 3/8"	1 3/32"	7/8#
	D10-004-215	3/8" NPT LH									
G 3/8" (BSP)	D10-003-210	G 3/8" (BSP) RH	44	70	25	15	10	14	55	28	.4 Kg
	D10-003-211	G 3/8" (BSP) LH									
1/2" NPT	D12-004-214	1/2" NPT RH	2 7/32"	3 7/32"	1 1/4"	2 5/32"	1 5/32"	7/8"	2 23/32"	1 1/2"	1 3/4#
	D12-004-215	1/2" NPT LH									
G 1/2" (BSP)	D12-003-210	G 1/2" (BSP) RH	56	82	32	20	12	22	62	38	.8 Kg
	D12-003-211	G 1/2" (BSP) LH									
3/4" NPT	D20-004-214	3/4" NPT RH	2 7/16"	3 7/32"	1 11/32"	2 5/32"	2 3/32"	1 1/16"	3"	1 21/32"	2 1/4#
	D20-004-215	3/4" NPT LH									
G 3/4" (BSP)	D20-003-210	G 3/4" (BSP) RH	62	90	34	20	18	27	70	42	1.0 Kg
	D20-003-211	G 3/4" (BSP) LH									
1" NPT	D25-004-214	1" NPT RH	2 1/16"	3 15/16"	1 19/32"	1 5/16"	2 9/32"	1 1/4"	3 1/4"	1 7/8"	2 3/4#
	D25-004-215	1" NPT LH									
G 1" (BSP)	D25-003-210	G 1" (BSP) RH	68	100	40	24	23	32	76	48	1.3 Kg
	D25-003-211	G 1" (BSP) LH									
1 1/4" NPT	D32-004-214	1 1/4" NPT RH	3 5/32"	4 1/4"	1 11/16"	1"	1 3/16"	1 21/32"	3 5/16"	2 5/32"	4 1/4#
	D32-004-215	1 1/4" NPT LH									
G 1 1/4" (BSP)	D32-003-210	G 1 1/4" (BSP) RH	80	108	43	25	30	42	83	58	1.9 Kg
	D32-003-211	G 1 1/4" (BSP) LH									
1 1/2" NPT	D40-004-214	1 1/2" NPT RH	3 15/32"	4 15/32"	1 23/32"	1 1/2"	1 1/2"	1 13/16"	3 13/16"	2 7/16"	6 1/2#
	D40-004-215	1 1/2" NPT LH									
G 1 1/2" (BSP)	D40-003-210	G 1 1/2" (BSP) RH	88	114	44	26	38	46	88	62	3.0 Kg
	D40-003-211	G 1 1/2" (BSP) LH									