

# DEUBLIN

## AP Series High Pressure High Speed Unions

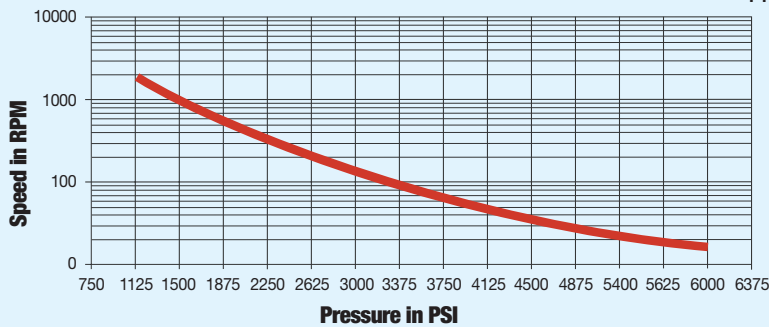
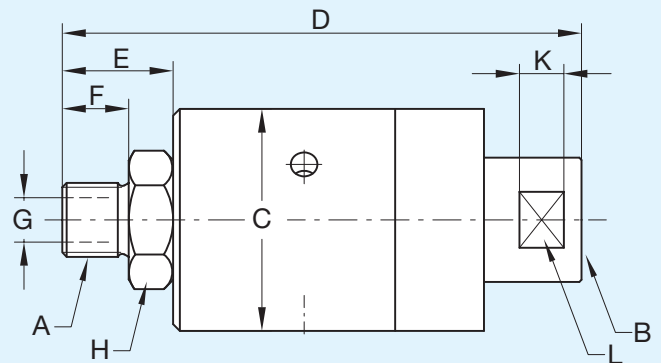
- monoflow design
- self-supported rotating union
- seal combination:  
Tungsten Carbide/Tungsten Carbide
- double row ball bearing; lubricated for life
- vent holes
- steel housing nickel-plated
- stainless steel end cap and rotor
- all parts in media contact are stainless steel and corrosion resistant
- designed for high pressure and high speed



### Operating Data

Maximum Hydraulic/Water Pressure <sup>①</sup>	5,700 PSI	400 bar
Maximum Speed <sup>①</sup>	1,500 RPM	1,500/min
Maximum Temperature	200°F	90°C

<sup>①</sup> Operation at maximum pressure combined with maximum speed should be avoided. For optional performance, refer to graph. If operating conditions are marginal, consult **DEUBLIN**.



B Inlet Port	Ordering Number	A Rotor Thread	C	D	E	F	G Rotor Hole	H Across Flats	K	L Across Flats	Shpg. Wt.
1/4" NPT	AP8-011-214	1/4" NPT RH	1 31/32"	4 19/32"	1"	19/32"	9/32"	1 1/16"	13/32"	1"	1.5#
	AP8-011-215	1/4" NPT LH									
G 1/4" (BSP)	AP8-010-210	G 1/4" (BSP) RH	50	117	25	15	7	27	10	25	.7 Kg
	AP8-010-211	G 1/4" (BSP) LH									
3/8" NPT	AP10-011-214	3/8" NPT RH	1 31/32"	4 19/32"	1"	19/32"	13/32"	1 1/16"	13/32"	1"	1.5#
	AP10-011-215	3/8" NPT LH									
G 3/8" (BSP)	AP10-010-210	G 3/8" (BSP) RH	50	117	25	15	10	27	10	25	.7 Kg
	AP10-010-211	G 3/8" (BSP) LH									
1/2" NPT	AP12-011-214	1/2" NPT RH	1 31/32"	4 13/16"	1 3/16"	25/32"	15/32"	1 1/16"	13/32"	1"	2#
	AP12-011-215	1/2" NPT LH									
G 1/2" (BSP)	AP12-010-210	G 1/2" (BSP) RH	50	122	30	20	12	27	10	25	1 Kg
	AP12-010-211	G 1/2" (BSP) LH									