

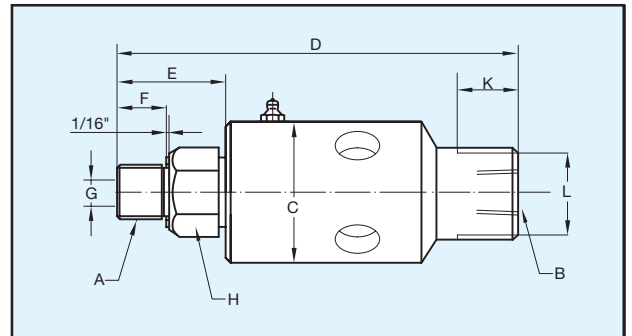


DEUBLIN Model 927 High Pressure / Low Torque Water Union

- monoflow design
- self-supported rotating union
- axial housing connection
- balanced mechanical seal
- seal combination:
Tungsten Carbide/Tungsten Carbide
- slinger and vents protect bearings
- low torque design
- stainless steel housing and rotor

Operating Data

Maximum Water Pressure	4,000 PSI	276 bar
Maximum Speed	2,000 RPM	2,000/min
Maximum Flow	4 GPM	15 L/min
Maximum Temperature	200°F	90°C



B Port NPT	Ordering Number	A Rotor Thread	C	D	E	F	G Rotor Hole	H Across Flats	K	L Across Flats	Shpg. Wt.
3/8"	927-150-151	3/4"-16 UNF RH	2 1/4"	5 5/8"	1 9/16"	3/4"	3/16"	1 1/8"	1"	1 1/4"	3#
3/8"	927-150-152	3/4"-16 UNF LH									



DEUBLIN Model 22 Car Wash Union

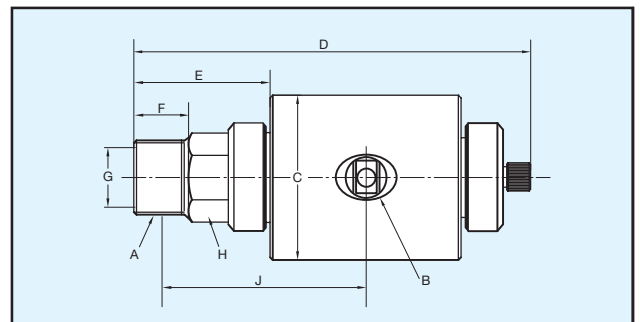
- monoflow design
- self-supported rotating union
- radial housing connection
- seal combination:
Silicon Carbide/Silicon Carbide
- stainless steel housing and rotor

Operating Data

Maximum Water Pressure ①	1,500 PSI	105 bar
Maximum Speed ①	250 RPM	250/min
Maximum Temperature	250°F	121°C

① Union is designed for continuous operation at either maximum speed or maximum pressure. If operating conditions are close to maximum pressure and speed simultaneously, consult **DEUBLIN**.

(Not suitable for overhead boom.)



B Port NPT	Ordering Number	A Rotor Thread	C	D	E	F	G Rotor Hole	H Across Flats	J Approx. Lock-up	Shpg. Wt.
3/4"	22-001-101	1/2" NPT RH	2 3/4"	5 9/16"	1 7/8"	1 1/16"	1/2"	1 1/8"	2 11/16"	4 3/4#
3/4"	22-001-102	1/2" NPT LH								
3/4"	22-001-103	3/4" NPT RH	2 3/4"	5 3/4"	2 1/16"	7/8"	1/2"	1 1/8"	2 7/8"	4 3/4#
3/4"	22-001-104	3/4" NPT LH								