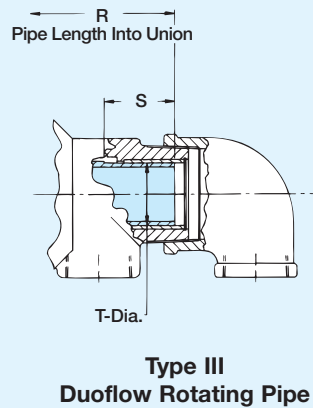
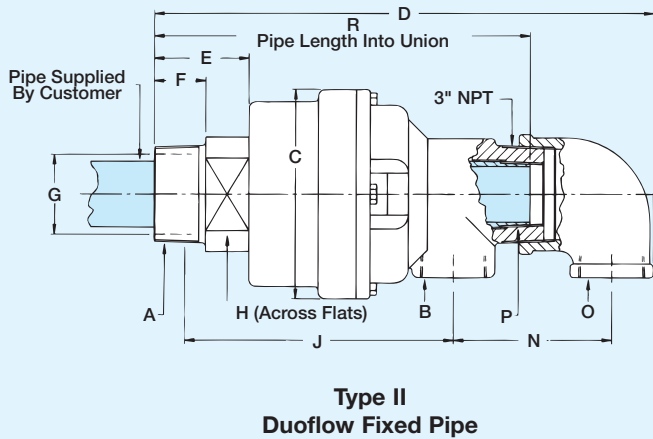
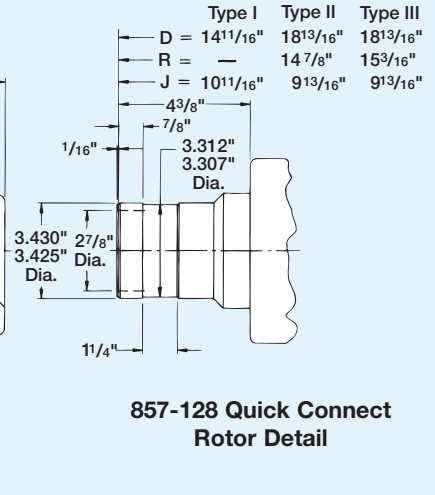
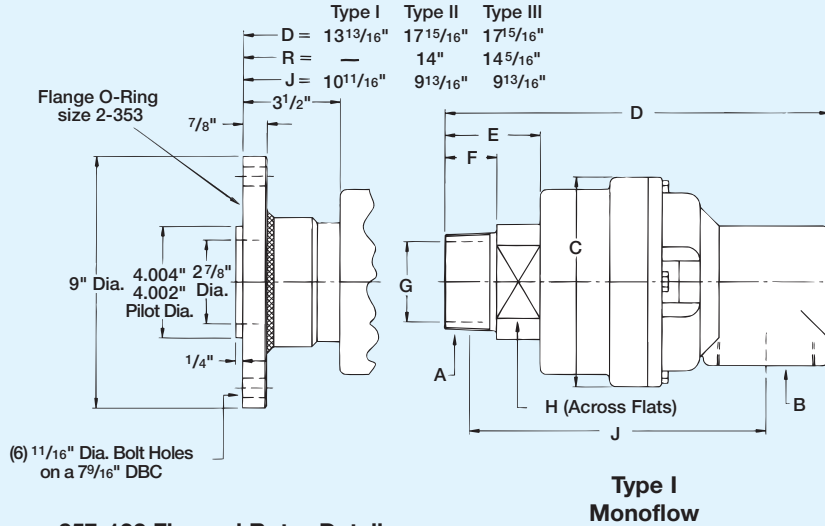


857 Series Specifications



B Port NPT	Ordering Number	A Rotor Thread	C Dia.	D	E	F	G	H	J	N	O NPT	P NPT	R	S	T	Shpg. Wt.
Type I 3"	857-000-101	3" NPT RH	7 ¹ / ₂ "	13 ³ / ₄ "	3 ³ / ₁₆ "	1 ⁷ / ₈ "	2 ⁷ / ₈ "	4"	10 ⁹ / ₁₆ "	-	-	-	-	-	-	50#
	857-000-102	3" NPT LH	190	344	83	44	73	102	244	-	-	-	-	-	-	23 Kg
	857-000-118	G3" (BSP) RH	190	344	83	44	73	102	244	-	-	-	-	-	-	23 Kg
	857-000-119	G3" (BSP) LH	190	344	83	44	73	102	244	-	-	-	-	-	-	23 Kg
Type II 2"	857-001-101	3" NPT RH	7 ¹ / ₂ "	17 ⁷ / ₈ "	3 ³ / ₁₆ "	1 ⁷ / ₈ "	2 ⁷ / ₈ "	4"	9 ³ / ₄ "	5 ¹¹ / ₁₆ "	2"	2"	13 ¹⁵ / ₁₆ "	-	-	55#
	857-001-102	3" NPT LH	190	451	83	44	73	102	228	144	2"	2"	351	-	-	25 Kg
	857-001-118	G3" (BSP) RH	190	451	83	44	73	102	228	144	2"	2"	351	-	-	25 Kg
	857-001-119	G3" (BSP) LH	190	451	83	44	73	102	228	144	2"	2"	351	-	-	25 Kg
Type III 2"	857-002-101	3" NPT RH	7 ¹ / ₂ "	17 ⁷ / ₈ "	3 ³ / ₁₆ "	1 ⁷ / ₈ "	2 ⁷ / ₈ "	4"	9 ³ / ₄ "	5 ¹¹ / ₁₆ "	2"	-	14 ¹ / ₄ "	2 ³ / ₄ "	2.308"	55#
	857-002-102	3" NPT LH	190	451	83	44	73	102	228	144	2"	-	355	70	2.302"	25 Kg
	857-002-118	G3" (BSP) RH	190	451	83	44	73	102	228	144	2"	-	355	70	58.62	25 Kg
	857-002-119	G3" (BSP) LH	190	451	83	44	73	102	228	144	2"	-	355	70	58.47	25 Kg