

# DEUBLIN

## 2", 2½", 3" & 4" Cartridge Water Unions

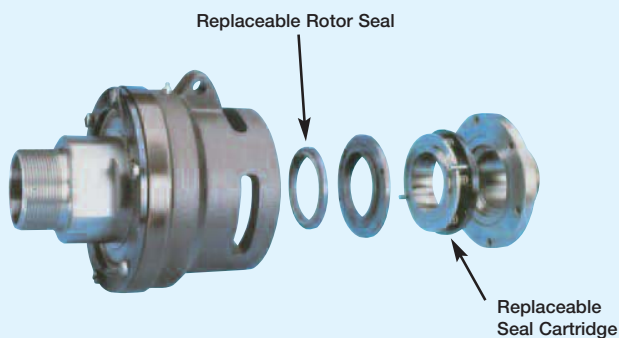
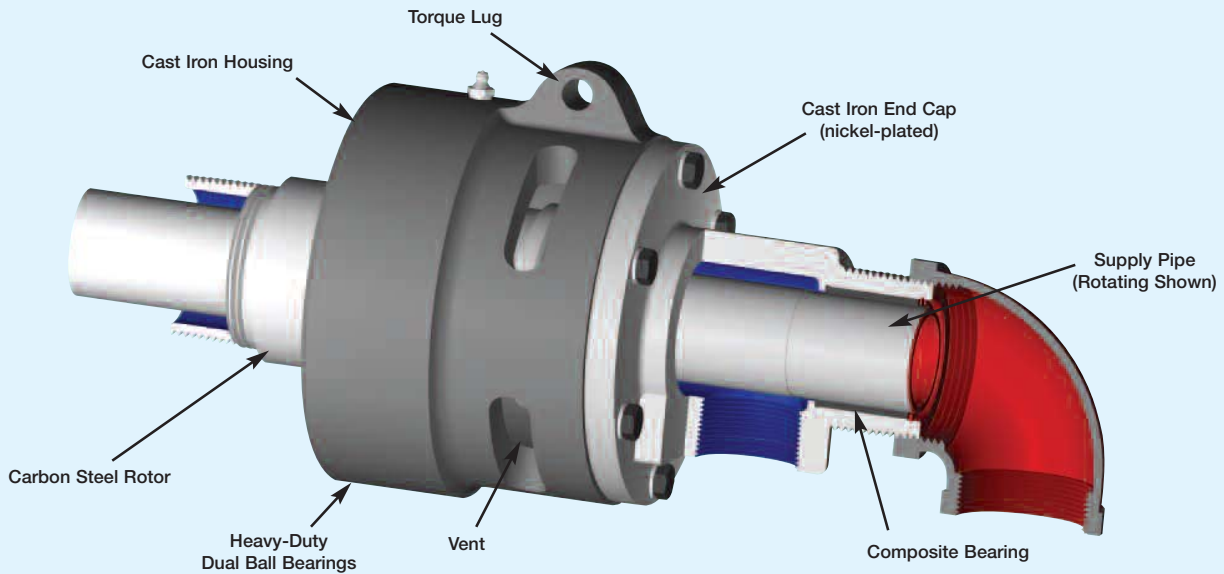
- monoflow and duoflow design
- self-supported rotating union
- radial housing connection
- balanced mechanical seal
- seal combinations:  
Carbon Graphite/Tungsten Carbide - standard  
Silicon Carbide/Tungsten Carbide - E.L.S.
- steel banded floating seal
- easy and quick replacement of sealing components
- full-media flow
- vent slots
- cast iron housing
- steel rotor flanged/threaded
- Lubrication Guide page 55



### Operating Data

Maximum Water Pressure	150 PSI	10 bar
Maximum Speed	750 RPM	750/min
Torque for	Model 6200	4 ft.lbs 5.4 Nm
	Model 6250	7 ft.lbs 9.5 Nm
	Model 6300	8 ft.lbs 10.9 Nm
	Model 6400	10 ft.lbs 13.6 Nm

Maximum Temperature      250°F      >250°F consult **DEUBLIN**

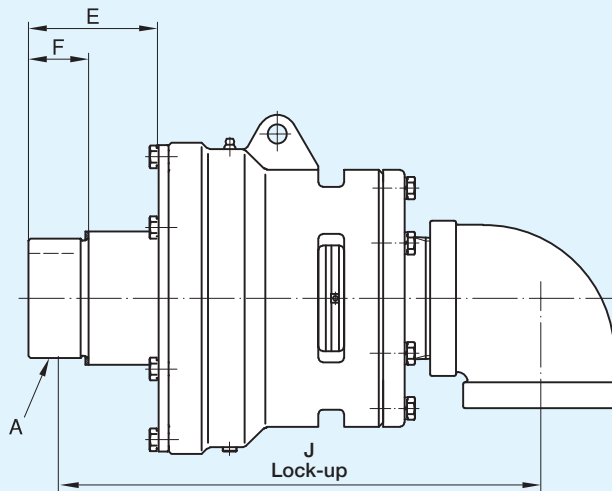


### DEUBLIN Exclusive On-The-Machine Repair Cartridge

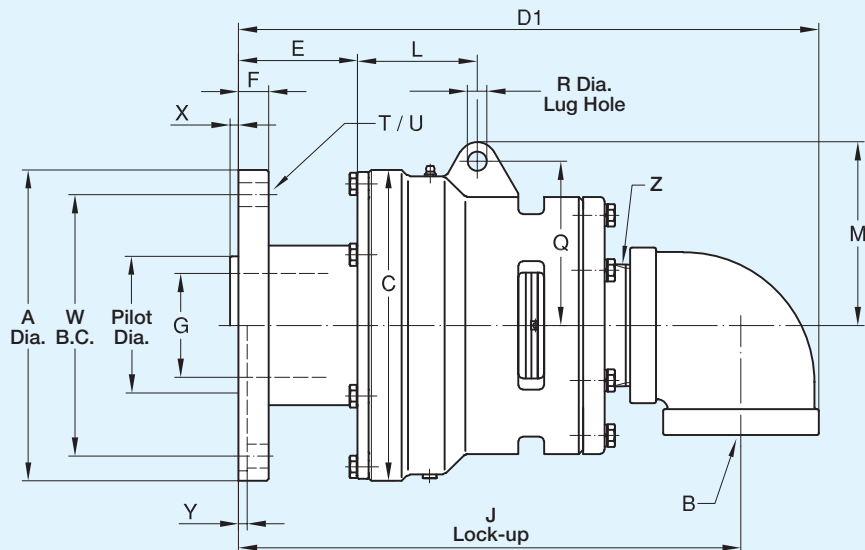
Seals are replaced quickly and easily. There's no need to remove hose connections or use special tools. Make sure the system is cold and pressureless! Simply remove 6 hex bolts and end cap, then remove floating seal cartridge and rotor seal face and replace with new seals. Rotor seal is keyed and sealed to the rotor with a built-in O-Ring. Replace end cap, hex bolts and safety wire. Detailed instructions available from **DEUBLIN**.

# Monoflow Rotating Union

## Threaded Rotor



## Flanged Rotor

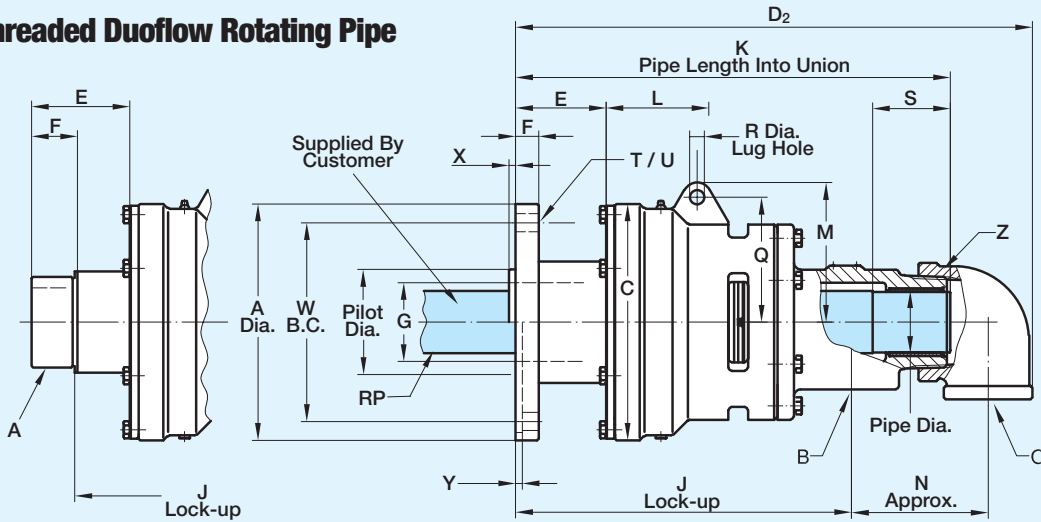


**Flanged O-Ring**  
 (supplied by DEUBLIN) for:  
 Model O-Ring Size  
 6200 2-343 Viton  
 6250 2-343 Viton  
 6300 2-353 Viton  
 6400 2-361 Viton

B Port NPT	Ordering Number		A Rotor Thread	C	D <sub>1</sub>	E	F	G	J	L	M	Q	R	T	U	W	Pilot Dia.	X	Y	Z NPT	Shpg. Wt.	
	Standard	E.L.S.																				
2"	6200-001-123	6200-016-123	2" NPT RH	5 1/4"	12"	2 1/8"	1 1/2"	1 1/8"	9 3/8"	2 7/8"	3 3/16"	3 3/16"	1/2"	-	-	-	-	-	-	2"	21#	
	6200-001-135	6200-016-135	2" NPT LH	5 1/4"	12"	2 1/8"	1 1/2"	1 1/8"	9 3/8"	2 7/8"	3 3/16"	3 3/16"	1/2"	-	-	-	-	-	-	2"	21#	
	6200-001-137	6200-016-137	G2"(BSP) RH	133	295	63.5	28.6	47	228	73	90	78	12.7	-	-	-	-	-	-	2"	9.5 Kg	
	6200-001-139	6200-016-139	G2"(BSP) LH	133	295	63.5	28.6	47	228	73	90	78	12.7	-	-	-	-	-	-	2"	9.5 Kg	
	6200-001-115	6200-016-115	9" O.D. FLANGE	5 1/4"	12"	3 1/4"	1"	1 1/8"	10 1/4"	2 7/8"	3 3/16"	3 3/16"	1/2"	4	1 1/16"	6 3/16"	8.317"	8.315"	-	1/4"	2"	32#
2 1/2"	6250-001-115	6250-018-115	2 1/2" NPT RH	7"	14 5/8"	3 3/4"	1 1/8"	2 3/8"	12"	3 3/4"	4 7/16"	3 7/8"	9/16"	-	-	-	-	-	-	2 1/2"	44 1/2#	
	6250-001-119	6250-018-119	2 1/2" NPT LH	7"	14 5/8"	3 3/4"	1 1/8"	2 3/8"	12"	3 3/4"	4 7/16"	3 7/8"	9/16"	-	-	-	-	-	-	2 1/2"	44 1/2#	
	6250-001-121	6250-018-121	G2 1/2"(BSP) RH	178	371	82.5	38.1	60	290	95	113	98	14.3	-	-	-	-	-	-	2 1/2"	20.2 Kg	
	6250-001-123	6250-018-123	G2 1/2"(BSP) LH	178	371	82.5	38.1	60	290	95	113	98	14.3	-	-	-	-	-	-	2 1/2"	20.2 Kg	
	6250-001-300	6250-018-300	9" O.D. FLANGE	7"	15"	3 5/8"	1"	2 3/8"	12 15/16"	3 3/4"	4 7/16"	3 7/8"	9/16"	4	1 1/16"	6 3/16"	8.317"	8.315"	-	1/4"	2 1/2"	59#
3"	6300-001-157	6300-015-157	3" NPT RH	9"	17 3/8"	3 3/8"	1 1/8"	2 1/8"	14"	3 3/8"	5 5/16"	4 3/4"	9/16"	-	-	-	-	-	-	3"	98#	
	6300-001-158	6300-015-158	3" NPT LH	9"	17 3/8"	3 3/8"	1 1/8"	2 1/8"	14"	3 3/8"	5 5/16"	4 3/4"	9/16"	-	-	-	-	-	-	3"	98#	
	6300-001-161	6300-015-161	G3"(BSP) RH	229	433	95	44.4	73	335	87	135	121	14.3	-	-	-	-	-	-	3"	45.5 Kg	
	6300-001-162	6300-015-162	G3"(BSP) LH	229	433	95	44.4	73	335	87	135	121	14.3	-	-	-	-	-	-	3"	45.5 Kg	
	6300-001-103	6300-015-103	9" O.D. FLANGE	9"	16 3/4"	3 7/8"	7/8"	3"	14 1/2"	3 3/8"	5 5/16"	4 3/4"	9/16"	6	1 1/16"	7 7/16"	4.004"	4.002"	1/4"	-	3"	113#
4"	6400-030-330	6400-042-330	10 7/8" O.D. FLANGE	11"	19"	3"	7/8"	4"	16 3/8"	3 3/4"	6 3/8"	5 1/4"	5/8"	6	1 3/16"	9"	4.749"	4.746"	.300	-	4"	156#

Note: Threaded Rotors Not For Calendar Service.

## Flanged/Threaded Duoflow Rotating Pipe



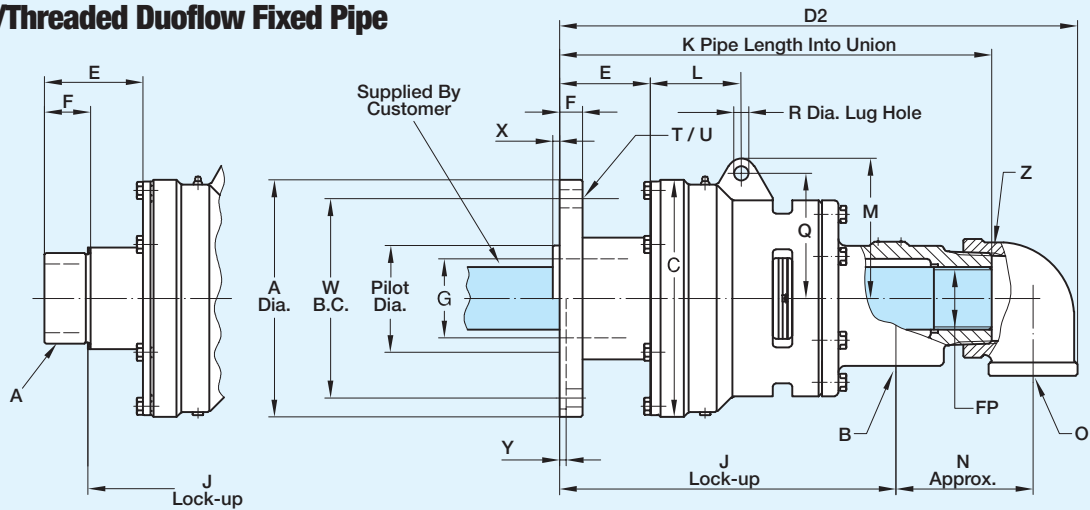
### Duoflow Rotating Pipe Models

B & O Port NPT	Standard	E.L.S.	A	C	D <sub>2</sub>	E	F	G	J	K	L
(2) x 1"	6200-002-123	6200-030-123	2" NPT RH	5 1/4"	12 7/8"	2 5/16"	1 1/2"	1 7/8"	8"	10 5/8"	2 7/8"
	6200-002-135	6200-030-135	2" NPT LH	5 1/4"	12 7/8"	2 5/16"	1 1/2"	1 7/8"	8"	10 5/8"	2 7/8"
	6200-002-137	6200-030-137	G2" (BSP) RH	133	314	63.5	28.6	47	189	260	73
	6200-002-139	6200-030-139	G2" (BSP) LH	133	314	63.5	28.6	47	189	260	73
(2) x 1 1/2"	6200-002-115	6200-030-115	9" O.D. FLANGE	5 1/4"	13 3/8"	3 3/4"	1"	1 7/8"	8 5/8"	10 1/8"	2 7/8"
(2) x 2"	6250-002-115	6250-030-115	2 1/2" NPT RH	7"	15 5/8"	3 3/4"	1 7/8"	2 3/8"	9 3/4"	12 3/8"	3 3/4"
	6250-002-119	6250-030-119	2 1/2" NPT LH	7"	15 5/8"	3 3/4"	1 7/8"	2 3/8"	9 3/4"	12 3/8"	3 3/4"
	6250-002-121	6250-030-121	G2 1/2" (BSP) RH	178	403	82.5	38.1	60	228.6	325	95
	6250-002-123	6250-030-123	G2 1/2" (BSP) LH	178	403	82.5	38.1	60	228.6	325	95
(2) x 2 1/2"	6250-002-300	6250-030-300	9" O.D. FLANGE	7"	16 1/4"	3 5/8"	1"	2 3/8"	10 1/8"	13 1/2"	3 3/4"
	6300-002-157	6300-030-157	3" NPT RH	9"	20"	3 3/8"	1 7/8"	2 7/8"	12 1/4"	16 3/8"	3 7/8"
	6300-002-158	6300-030-158	3" NPT LH	9"	20"	3 3/8"	1 7/8"	2 7/8"	12 1/4"	16 3/8"	3 7/8"
	6300-002-161	6300-030-161	G3" (BSP) RH	229	505	95	44.4	73	288.9	412	87
	6300-002-162	6300-030-162	G3" (BSP) LH	229	505	95	44.4	73	288.9	412	87
(2) x 2 1/2"	6300-002-103	6300-030-103	9" O.D. FLANGE	9"	19 9/16"	3 7/8"	7/8"	3"	12 3/4"	16"	3 7/8"
(2) x 2 1/2"	6400-031-330	6400-051-330	10 7/8" O.D. FLANGE	11"	21 3/8"	3"	7/8"	4"	13 3/4"	17 1/2"	3 3/4"

### Duoflow Fixed Pipe Models

B & O Port NPT	Standard	E.L.S.	A	C	D <sub>2</sub>	E	F	G	J	K	L
(2) x 1"	6200-011-123	6200-040-123	2" NPT RH	5 1/4"	12 7/8"	2 5/16"	1 1/2"	1 7/8"	8"	10 5/8"	2 7/8"
	6200-011-135	6200-040-135	2" NPT LH	5 1/4"	12 7/8"	2 5/16"	1 1/2"	1 7/8"	8"	10 5/8"	2 7/8"
	6200-013-137	6200-020-137	G2" (BSP) RH	133	314	63.5	28.6	47	189	246	73
	6200-013-139	6200-020-139	G2" (BSP) LH	133	314	63.5	28.6	47	189	246	73
(2) x 1 1/2"	6200-011-115	6200-040-115	9" O.D. FLANGE	5 1/4"	13 3/8"	3 3/4"	1"	1 7/8"	8 5/8"	10 1/8"	2 7/8"
(2) x 2"	6250-006-115	6250-040-115	2 1/2" NPT RH	7"	15 5/8"	3 3/4"	1 7/8"	2 3/8"	9 3/4"	13"	3 3/4"
	6250-006-119	6250-040-119	2 1/2" NPT LH	7"	15 5/8"	3 3/4"	1 7/8"	2 3/8"	9 3/4"	13"	3 3/4"
	6250-025-121	6250-035-121	G2 1/2" (BSP) RH	178	403	82.5	38.1	60	228.6	330	95
	6250-025-123	6250-035-123	G2 1/2" (BSP) LH	178	403	82.5	38.1	60	228.6	330	95
(2) x 2 1/2"	6250-006-300	6250-040-300	9" O.D. FLANGE	7"	16 1/4"	3 5/8"	1"	2 3/8"	10 1/8"	13 3/8"	3 3/4"
	6300-006-157	6300-040-157	3" NPT RH	9"	20"	3 3/8"	1 7/8"	2 7/8"	12 1/4"	16 1/8"	3 7/8"
	6300-006-158	6300-040-158	3" NPT LH	9"	20"	3 3/8"	1 7/8"	2 7/8"	12 1/4"	16 1/8"	3 7/8"
	6300-025-161	6300-035-161	G3" (BSP) RH	229	505	95	44.4	73	288.9	404	87
	6300-025-162	6300-035-162	G3" (BSP) LH	229	505	95	44.4	73	288.9	404	87
(2) x 2 1/2"	6300-006-103	6300-040-103	9" O.D. FLANGE	9"	19 9/16"	3 7/8"	7/8"	3"	12 3/4"	16	3 7/8"
(2) x 2 1/2"	6400-024-330	6400-054-330	10 7/8" O.D. FLANGE	11"	21 3/8"	3"	7/8"	4"	13 3/4"	17"	3 3/4"

## Flanged/Threaded Duoflow Fixed Pipe



M	N	O NPT	Pipe Dia.	RP	Q	R	S	T	U	W	Pilot Dia.	X	Y	Z NPT	Shpg. Wt.
3 <sup>9</sup> / <sub>16</sub> "	3 <sup>3</sup> / <sub>8</sub> "	1"	1.245" 1.240"	1"	3 <sup>1</sup> / <sub>16</sub> "	1/2"	1 1/2"	-	-	-	-	-	-	2"	29#
90	86	1"	31.62 31.49	1"	78	12.7	38	-	-	-	-	-	-	2"	13.2 Kg
3 <sup>9</sup> / <sub>16</sub> "	3 <sup>3</sup> / <sub>8</sub> "	1"	1.245" 1.240"	1"	3 <sup>1</sup> / <sub>16</sub> "	1/2"	1 1/2"	4	1 <sup>1</sup> / <sub>16</sub> "	6 <sup>3</sup> / <sub>8</sub> "	8.317" 8.315"	-	1/4"	2"	40#
4 <sup>7</sup> / <sub>16</sub> "	4 <sup>1</sup> / <sub>16</sub> "	1 1/2"	1.867" 1.865"	1 1/2"	3 <sup>7</sup> / <sub>8</sub> "	9/16"	1 5/8"	-	-	-	-	-	-	2 1/2"	55 1/2#
113	103	1 1/2"	47.42 47.37	1 1/2"	98	14.3	41	-	-	-	-	-	-	2 1/2"	25.2 Kg
4 <sup>7</sup> / <sub>16</sub> "	4 <sup>1</sup> / <sub>16</sub> "	1 1/2"	1.867" 1.865"	1 1/2"	3 <sup>7</sup> / <sub>8</sub> "	9/16"	1 5/8"	4	1 <sup>1</sup> / <sub>16</sub> "	6 <sup>3</sup> / <sub>8</sub> "	8.317" 8.315"	-	1/4"	2 1/2"	70#
5 <sup>5</sup> / <sub>16</sub> "	5 <sup>3</sup> / <sub>16</sub> "	2"	2.308" 2.302"	2"	4 <sup>3</sup> / <sub>4</sub> "	9/16"	2 3/4"	-	-	-	-	-	-	3"	105#
135	132	2"	58.62 58.47	2"	121	14.3	70	-	-	-	-	-	-	3"	47.7 Kg
5 <sup>5</sup> / <sub>16</sub> "	5 <sup>3</sup> / <sub>16</sub> "	2"	2.308" 2.302"	2"	4 <sup>3</sup> / <sub>4</sub> "	9/16"	2 3/4"	6	1 <sup>1</sup> / <sub>16</sub> "	7 <sup>9</sup> / <sub>16</sub> "	4.004" 4.002"	1/4"	-	3"	120#
6 <sup>1</sup> / <sub>8</sub> "	5 <sup>3</sup> / <sub>4</sub> "	2 1/2"	2.745" 2.742"	2 1/2"	5 <sup>1</sup> / <sub>4</sub> "	5/8"	2 1/2"	6	1 <sup>3</sup> / <sub>16</sub> "	9"	4.749" 4.746"	.300"	-	4"	168#

M	N	O NPT	FP	Q	R	T	U	W	Pilot Dia.	X	Y	Z NPT	Shpg. Wt.
3 <sup>9</sup> / <sub>16</sub> "	3 <sup>3</sup> / <sub>8</sub> "	1"	1" NPT	3 <sup>1</sup> / <sub>16</sub> "	1/2"	-	-	-	-	-	-	2"	29#
90	86	1"	G1" (BSP)	78	12.7	-	-	-	-	-	-	2"	13.2 Kg
3 <sup>9</sup> / <sub>16</sub> "	3 <sup>3</sup> / <sub>8</sub> "	1"	1" NPT	3 <sup>1</sup> / <sub>16</sub> "	1/2"	4	1 <sup>1</sup> / <sub>16</sub> "	6 <sup>3</sup> / <sub>8</sub> "	8.317" 8.315"	-	1/4"	2"	40#
4 <sup>7</sup> / <sub>16</sub> "	4 <sup>1</sup> / <sub>16</sub> "	1 1/2"	1 1/2" NPT	3 <sup>7</sup> / <sub>8</sub> "	9/16"	-	-	-	-	-	-	2 1/2"	55 1/2#
113	103	1 1/2"	G1 1/2" (BSP)	98	14.3	-	-	-	-	-	-	2 1/2"	25.2 Kg
4 <sup>7</sup> / <sub>16</sub> "	4 <sup>1</sup> / <sub>16</sub> "	1 1/2"	1 1/2" NPT	3 <sup>7</sup> / <sub>8</sub> "	9/16"	4	1 <sup>1</sup> / <sub>16</sub> "	6 <sup>3</sup> / <sub>8</sub> "	8.317" 8.315"	-	1/4"	2 1/2"	70#
5 <sup>5</sup> / <sub>16</sub> "	5 <sup>3</sup> / <sub>16</sub> "	2"	2" NPT	4 <sup>3</sup> / <sub>4</sub> "	9/16"	-	-	-	-	-	-	3"	105#
135	132	2"	G2" (BSP)	121	14.3	-	-	-	-	-	-	3"	47.7 Kg
5 <sup>5</sup> / <sub>16</sub> "	5 <sup>3</sup> / <sub>16</sub> "	2"	2" NPT	4 <sup>3</sup> / <sub>4</sub> "	9/16"	6	1 <sup>1</sup> / <sub>16</sub> "	7 <sup>9</sup> / <sub>16</sub> "	4.004" 4.002"	1/4"	-	3"	120#
6 <sup>1</sup> / <sub>8</sub> "	5 <sup>3</sup> / <sub>4</sub> "	2 1/2"	2 1/2" NPT	5 <sup>1</sup> / <sub>4</sub> "	5/8"	6	1 <sup>3</sup> / <sub>16</sub> "	9"	4.749" 4.746"	.300"	-	4"	168#