



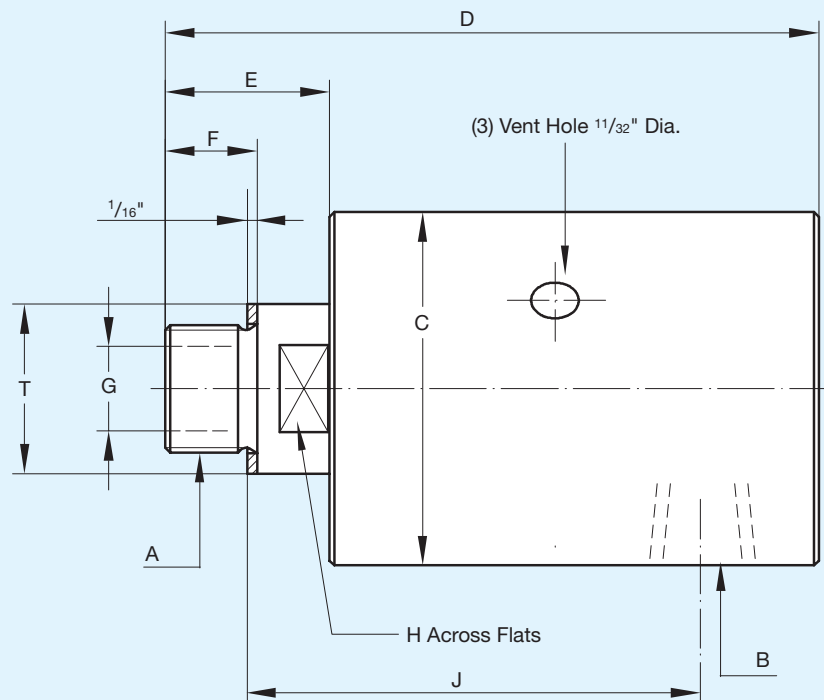
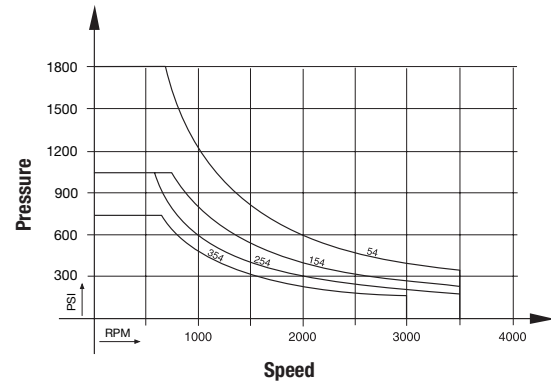
DEUBLIN Stainless Steel Unions

- monoflow and duoflow (available) design
- self-supported rotating union
- radial or axial (available) housing connection
- seal combinations:
Carbon Graphite/Ceramic - standard
Tungsten Carbide/Ceramic - E.L.S.
- wetted parts made of 316 stainless steel
- suitable for the food, chemical & pharmaceutical industries
- full-media flow

Operating Data

Maximum Pressure and Maximum Speed	See Diagram	
Maximum Speed NPT	1,500 RPM	1,500/min
Maximum Temperature	200°F	>200°F consult DEUBLIN

(Temperatures above 160°F pressure should not exceed 150 PSI (10 bar) and media must be in liquid form.)



B Port NPT	Ordering Number		A Rotor Thread	C Dia.	D	E	F	G	H	J	T	Shpg. Wt.
	Standard Model	E.L.S. Model										
3/8"	54-050-117	54-051-112	3/8" NPT RH	1 15/16"	4"	1 1/16"	3/8"	3/8"	3/4"	3"	7/8"	1 1/2#
	54-050-178	54-051-110	G 3/8" (BSP) RH	49	101	26	16	9.5	19	71.5	22	1.1 Kg
1/2"	154-050-117	154-051-112	1/2" NPT RH	2 1/2"	4 15/16"	1 7/16"	7/8"	1 1/2"	1 5/16"	3 3/4"	1 3/16"	2#
	154-050-178	154-051-110	G 1/2" (BSP) RH	64	123	34	19	12.7	24	89	30	1.8 Kg
3/4"	254-050-117	254-051-112	3/4" NPT RH	2 7/8"	5 5/16"	1 15/32"	7/8"	1 1/16"	1 3/16"	4 1/8"	1 3/8"	5 3/4#
	254-050-178	254-051-110	G 3/4" (BSP) RH	73	135	34	19	17.5	30	98	35	2.6 Kg
1"	354-050-117	354-051-112	1" NPT RH	3 1/16"	6 3/16"	1 5/16"	1 1/8"	7/8"	1 7/16"	4 7/8"	1 25/32"	11 1/4#
	354-050-178	354-051-110	G 1" (BSP) RH	94	161	43	22	22.2	36	117	45	5.1 Kg

Note: 1/4" & 1 1/2" available