

DEUBLIN

Tandem Air, Hydraulic, Brake Fluid Dual Passage Unions

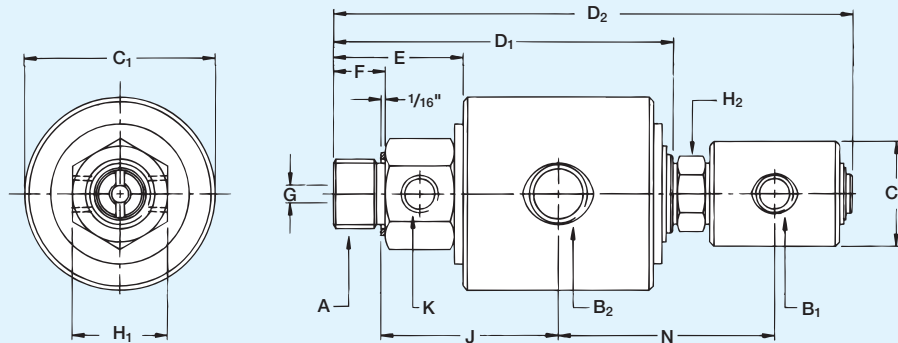
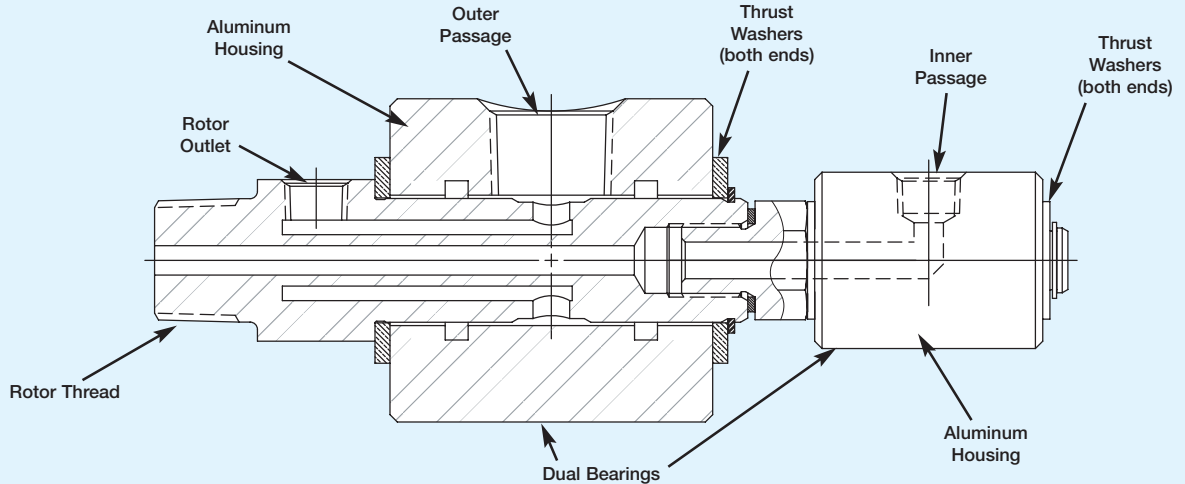
- duoflow (Tandem) design
- self-supported rotating union
- no interpassage leakage on the duoflow design
- steel rotor nickel-plated
- special bearing
- aluminum housing



Operating Data

Maximum Air Pressure	150 PSI	10 bar
Maximum Vacuum	28" Hg	6.7 kPa
Maximum Hydraulic Pressure ^①	3,000 PSI	204 bar
Maximum Speed ^①	250 RPM	250/min
Maximum Temperature	250°F	120°C

① Union is designed for continuous operation at either maximum speed or maximum pressure. If operating conditions are close to maximum pressure and speed simultaneously, consult **DEUBLIN**.



Inlet Ports NPT	Ordering Number			A Rotor Thread	C1	C2	D1	D2	E	F	G	H1 Across Flats	H2 Across Flats	J Lock- Up	K Tap NPT	N Lock- up	Shpg. Wt.
	Air-Hydraulic	Vacuum	Brake Fluid														
B1 1/4" B2 1/2"	2117-001-109	2117-017-109	2117-018-136	3/4" NPT RH	2 3/4"	1 1/2"	4 63/64"	7 11/16"	1 15/16"	7/8"	1/4"	1 1/8"	7/8"	2 7/8"	1/4"	3 3/16"	3#
	2117-001-103	2117-017-103	2117-018-113	1"-14 UNS RH	2 3/4"	1 1/2"	4 59/64"	7 11/16"	1 7/8"	11/16"	1/4"	1 3/8"	7/8"	2 9/16"	1/4"	3 3/16"	3#
	2117-001-105	2117-017-105	2117-018-137	G 3/4" (BSP) RH	70	38	124	195	47	17	6	35	22	65	1/4"	81	1.4 Kg