



# DEUBLIN

## Low Speed Air, Hydraulic, Brake Fluid Unions

- monoflow design
- self-supported rotating union
- steel rotor nickel-plated
- special bearing
- aluminum housing

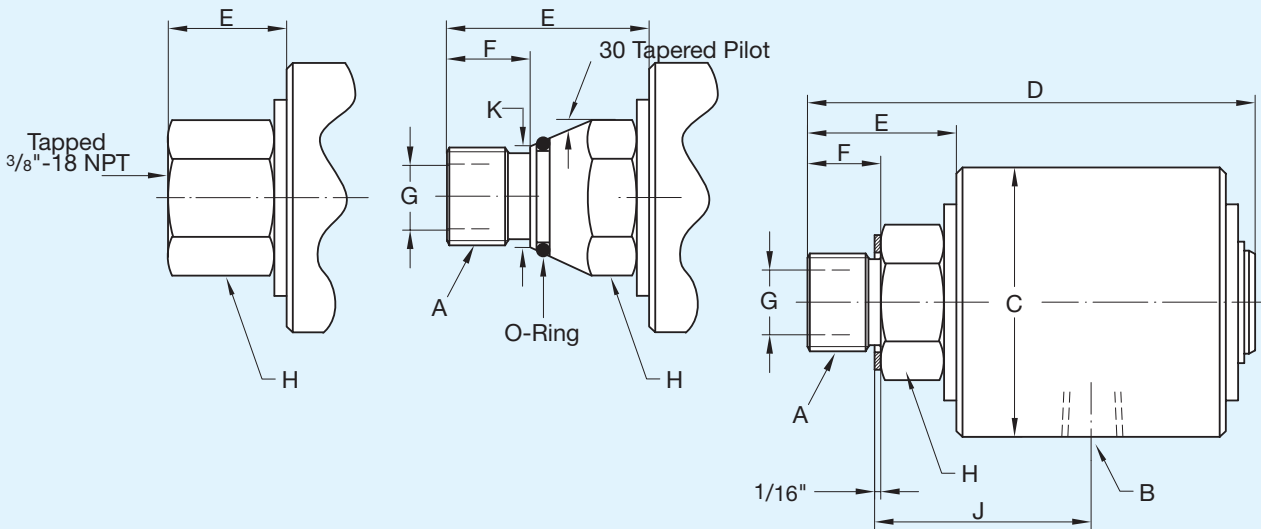
### Operating Data

Maximum Air Pressure	150 PSI	10 bar
Maximum Vacuum	28" Hg	6.7 kPa
Maximum Hydraulic Pressure <sup>①</sup>	3,000 PSI	204 bar
Maximum Speed <sup>①</sup>	250 RPM	250/min
Maximum Temperature	250°F	120°C

① Union is designed for continuous operation at either maximum speed or maximum pressure. If operating conditions are close to maximum pressure and speed simultaneously, consult **DEUBLIN**.

### -045 Rotor

### -023 & -048 Rotors



B Port NPT	Ordering Number			A Rotor Thread	C	D	E	F	G Rotor Hole	H Across Flats	J Lock-up	K	Shpg. Wt.
	Air-Hydraulic	Vacuum	Brake Fluid										
1/4"	17-025-012	17-051-012	17-086-012	5/8"-18 UNF RH	1 1/2"	3 1/4"	1 1/8"	5/8"	5/16"	7/8"	1 17/32"	-	1/2#
	17-025-041	17-051-041	17-086-041	3/8" NPT RH	1 1/2"	3 1/4"	1 1/8"	5/8"	5/16"	7/8"	1 25/32"	-	1/2#
	17-025-045	17-051-045	17-086-045	3/8" NPT (FEM) RH	1 1/2"	2 15/16"	1 3/16"	-	5/16"	7/8"	1 13/32"	-	1/2#
	17-025-023	17-051-023	17-086-023	5/8"-18 UNF T.PLT. RH	1 1/2"	3 15/32"	1 11/32"	5/8"	5/16"	7/8"	-	5/8"	1/2#
	17-025-039	17-051-039	17-086-039	G 3/8" (BSP) RH	38	83.3	28.5	16.6	8	22.2	39	-	.3 Kg
	17-025-046	17-051-046	17-086-046	M16 x 2 RH	38	83.3	28.5	15.8	8	22.2	39	-	.3 Kg
	17-025-048	17-051-048	17-086-048	M16 x 2 T.PLT. RH	38	89	35	15.8	8	22.2	-	15.8	.3 Kg
1/2"	21-001-109	21-083-109	21-063-109	1"-14 UNS RH	2 3/4"	4 7/16"	1 1/2"	3/4"	5/8"	1 3/8"	2 1/4"	-	2 1/2#
	21-001-101	21-083-101	21-063-101	3/4" NPT RH	2 3/4"	4 11/16"	1 5/8"	7/8"	5/8"	1 3/8"	2 19/32"	-	2 1/2#
	21-001-122	21-083-122	21-063-122	G 3/4" (BSP) RH	70	116	38	19	15.8	35	57	-	1.2 Kg
	21-001-121	21-083-121	21-063-121	M22 x 1.5 RH	70	111	33	14.2	12.7	35	57	-	1.2 Kg