

DEUBLIN

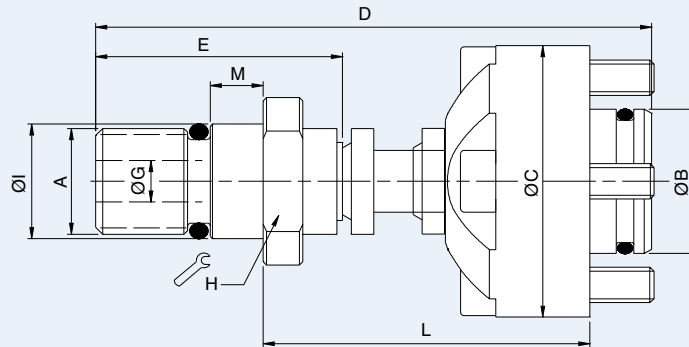
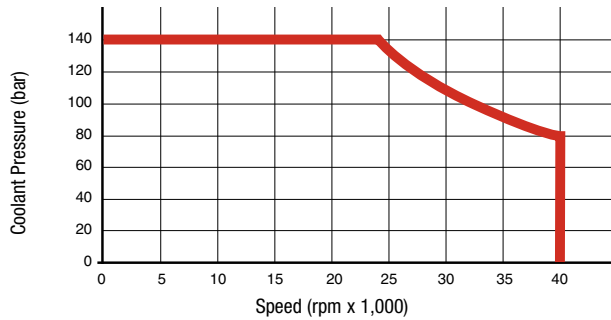
1154 Series Bearingless “AutoSense” “Long Stroke” Rotating Unions for Coolant and Air Service

- Single passage for coolant or MQL
- Patent-pending “AutoSense” technology automatically changes between closed seals and controlled leakage operation in response to the kind of media
- Non-rotating element has a “stroke” (axial movement) of more than 8 mm, to track drawbar movement even when union is mounted on the clamping device
- Full-flow design has no obstructions to trap swarf or debris
- Balanced mechanical seals made from silicon carbide for long life even under difficult operating conditions
- Anodised aluminium housing resists corrosion



Operating Data

Media	Water-based Coolant MQL (oil mist) up to 10 bar (145 psi) Air up to 10 bar (145 psi)	
Filtration	ISO 4406 Class 17/15/12, max. 60 micron	
Max. Speed	40.000 min ⁻¹	40,000 rpm
Max. Pressure	140 bar	2,030 psi
Max. Flow	24,3 l/min	6.4 gpm
Max. Temperature	70°C	160°F



	Ordering Number	B Supply Connection	C Overall Diameter	D Overall Length	L Mounting Distance	A Rotor Connection	E Rotor Length	G Bore Diameter	H Across Flats	I Pilot Diameter	M Pilot Length	Max. Speed (rpm)
Axial Connection	1154-002-105	16,4 mm Counterbore	31	72	49.0 / 42.0	M8 x 1 RH	37	4	15	9.000 / 8.994	3.5	40,000
	1154-002-109	16,4 mm Counterbore	31	63	37.0 / 30.0	M12 x 1 RH	28	5	15	12.995 / 12.986	6	40,000
	1154-003-107	20 mm Counterbore	39	68	40.0 / 33.0	M12 x 1.25 LH	36	5	15	12.995 / 12.986	6	40,000
	1154-012-109A	16,4 mm Counterbore	31	63	37.0 / 30.0	M12 x 1 RH	28	5	15	12.995 / 12.986	6	40,000

Note A: 1154-012-109 includes a spring to fully retract the non-rotating element when pressure is discontinued.

This series includes additional models.

Contact **DEUBLIN** at ☎ +49 (0) 6122-8002-0 or info@deublin.de