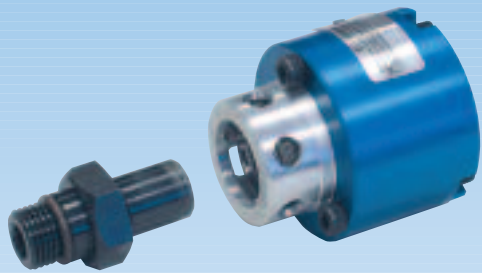


1121 Series Bearingless “Pop-Off” “Micro Stroke” Rotating Unions for Coolant Service

- Single passage for coolant or MQL
- Patented “pop-off” technology allows unlimited dry running without media pressure
- Ultra-short 0.1 mm pop-off stroke restricts drainage of residual coolant during tool change
- Full-flow design has no obstructions to trap chips or debris
- Balanced mechanical seals made from silicon carbide for long life even under difficult operating conditions
- Anodized aluminum housing resists corrosion

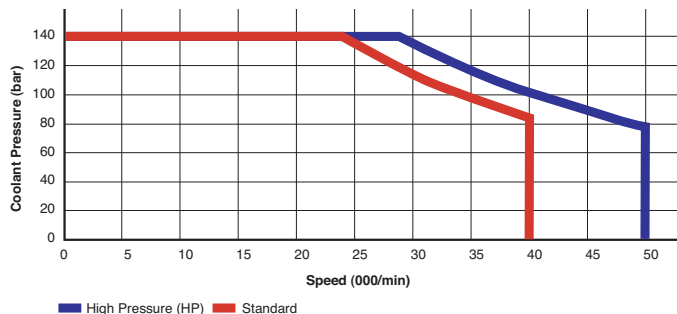


Operating Data

Media	Water-based Coolant MQL (oil mist) up to 10 bar (145 psi)	
Filtration	ISO 4406 Class 17/15/12, max. 60 micron	
Maximum Speed	40,000 min ⁻¹	40,000 rpm Standard
	50,000 min ⁻¹	50,000 rpm High Pressure (HP)
Maximum Pressure	140 bar	2,030 psi
	25.7 l/min	6.8 gpm
Maximum Flow	1121-330-327	41.3 l/min 10.9 gpm
	1121-330-345	87 l/min 23 gpm
Maximum Temperature	71°C	160°F

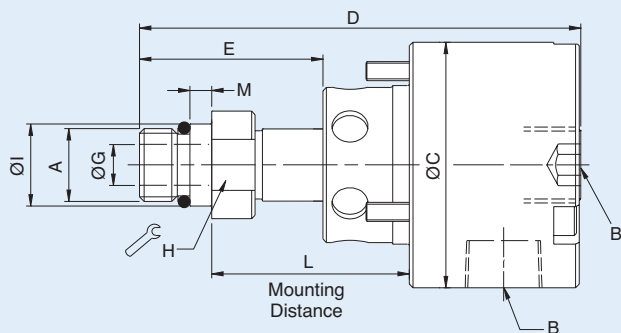


**NO AIR PRESSURE
WITH ROTATION**

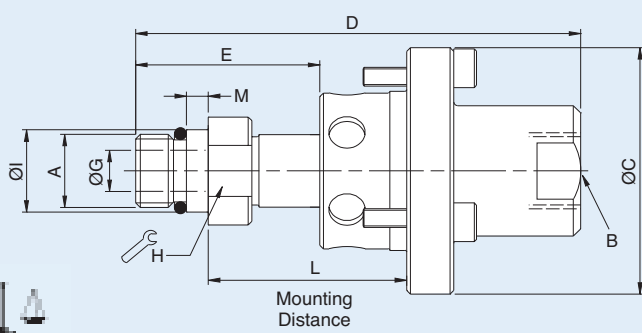


■ High Pressure (HP) ■ Standard

Dual Connection



Axial Connection



	Ordering Number	B Supply Connection	C Overall Diameter	D Overall Length	L Mounting Distance	A Rotor Connection	E Rotor Length	G Bore Diameter	H Across Flats	I Pilot Diameter	M Pilot Length	Max Speed (rpm)
Standard Dual Connection	1121-300-327	3/8" PT	54	94	39.6 / 38.6	M12 x 1.25 LH	37	6	18	14.000 / 13.995	5	40,000
	1121-300-345	3/8" PT	54	97	44.0 / 43.0	M16 x 1.5 LH	40	9	21	17.993 / 17.988	5	40,000
	1121-330-327	3/8" PT	54	94	39.6 / 38.6	M12 x 1.25 LH	37	6	18	14.000 / 13.995	5	40,000
	1121-330-345	3/8" PT	54	97	44.0 / 43.0	M16 x 1.5 LH	40	9	21	17.993 / 17.988	5	40,000
	1121-380-327	G 3/8" Radial 1/4" PT Axial	54	98	39.6 / 38.6	M12 x 1.25 LH	37	6	18	14.000 / 13.995	5	40,000
	1121-380-345	G 3/8" Radial 1/4" PT Axial	54	102	44.0 / 43.0	M16 x 1.5 LH	40	9	21	17.993 / 17.988	5	40,000
HP Axial Connection	1121-400-327	3/8" PT	54	94	39.6 / 38.6	M12 x 1.25 LH	37	6	18	14.000 / 13.995	5	40,000
	1121-400-345	3/8" PT	54	98	44.0 / 43.0	M16 x 1.5 LH	40	9	21	17.993 / 17.988	5	40,000
	1121-410-493	3/8" PT	54	105	39.6 / 38.6	M12 x 1.25 LH	40	5	18	14.000 / 13.995	5	50,000
	1121-430-431	3/8" PT	54	108	44.0 / 43.0	M16 x 1.5 LH	43	5	21	17.993 / 17.988	5	50,000