

DEUBLIN

1/8" to 1/2" Air-Hydraulic Unions

- monoflow design
- self-supported rotating union
- radial housing connection
- balanced mechanical seal
- seal combinations:
Carbon Graphite/Hardened Tool Steel or
Carbon Graphite/Silicon Carbide
- felt oiler in seal cavity for air service
- oiler for relubrication (3 - 5 drops/month)
- low torque
- weight-optimized design
- aluminum housing
- bearings lubricated for life

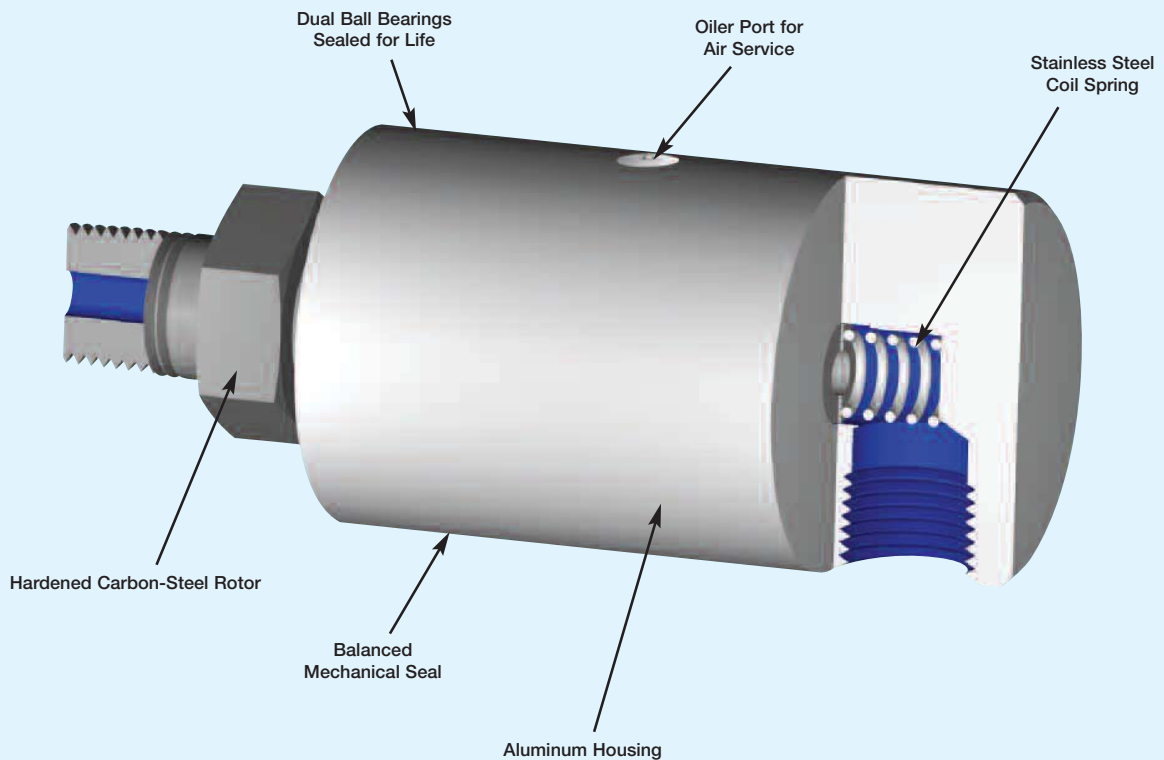


Operating Data

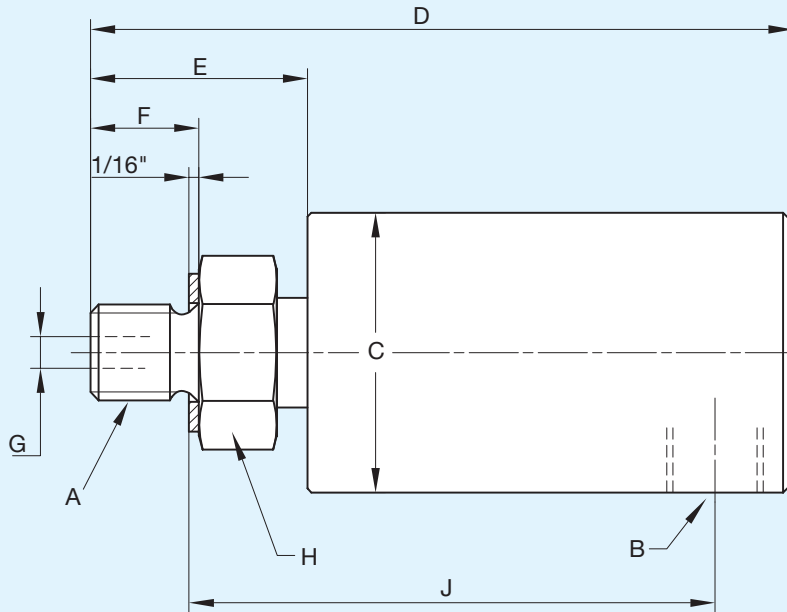
| | | |
|--------------------------------|-----------|-----------|
| Maximum Air Pressure | 150 PSI | 10 bar |
| Maximum Vacuum | 28" Hg | 6.7 kPa |
| Maximum Hydraulic Pressure | | |
| Model 1005 | 1,000 PSI | 70 bar |
| Model 1102 | 1,000 PSI | 70 bar |
| Model 1115 | 500 PSI | 34 bar |
| Model 1205 | 750 PSI | 50 bar |
| Model 2200 ^① | 1,000 PSI | 70 bar |
| Maximum Speed NPT Threads | 1,500 RPM | 1,500/min |
| Maximum Speed Straight Threads | 3,500 RPM | 3,500/min |
| Maximum Temperature | 250°F | 120°C |

^① Union is designed for continuous operation at either maximum speed or maximum pressure. If operating conditions are close to maximum pressure and speed simultaneously, consult **DEUBLIN**.

See next page for dimensional data.



Monoflow Rotating Union



| B Port NPT | Ordering No. | A Rotor Thread | C Dia. | D | E | F | G Rotor Hole | H Across Flats | J Lock-up | Shpg. Wt. |
|--------------|-----------------|-----------------|----------|----------|---------|------|--------------|----------------|-----------|-----------|
| | Model | | | | | | | | | |
| 1/8" | 1005-020-019 | 3/8"-24 UNF RH | 1 1/8" | 2 13/16" | 7/8" | 1/2" | 1/8" | 5/8" | 2 1/16" | 1/2# |
| | 1005-020-039 | 3/8"-24 UNF LH | | | | | | | | |
| | 1005-020-038 | 1/8" NPT RH | | | | | | | | |
| | 1005-020-037 | M10x1 RH | | | | | | | | |
| | 1005-020-049 | G 3/4" (BSP) RH | | | | | | | | |
| 1/4" | 1102-070-029 | 5/8"-18 UNF RH | 1 5/8" | 3 3/16" | 1 1/8" | 5/8" | 1/4" | 7/8" | 2 1/4" | 1# |
| | 1102-070-079 | 5/8"-18 UNF LH | | | | | | | | |
| | 1102-070-081 | 1/4" NPT RH | | | | | | | | |
| | 1102-070-082 | 1/4" NPT LH | | | | | | | | |
| | 1102-070-103 | G 1/4" (BSP) RH | | | | | | | | |
| 1102-070-104 | G 1/4" (BSP) LH | | | | | | | | | |
| 3/8" | 1115-000-001 | 5/8"-18 UNF RH | 1 23/32" | 3 15/16" | 1 1/16" | 5/8" | 3/8" | 15/16" | 2 27/32" | 1 1/2# |
| | 1115-000-017 | 5/8"-18 UNF LH | | | | | | | | |
| | 1115-000-002 | 3/8" NPT RH | | | | | | | | |
| | 1115-000-018 | 1/4" NPT RH | | | | | | | | |
| | 1115-000-205 | G 3/8" (BSP) RH | | | | | | | | |
| 1115-000-200 | M16x2 RH | | | | | | | | | |
| 1/2" | 1205-000-003 | 1/2" NPT RH | 2 1/4" | 4 9/16" | 1 7/16" | 7/8" | 1/2" | 1 1/8" | 3 1/2" | 1 1/2# |
| | 1205-000-004 | 1/2" NPT LH | | | | | | | | |
| | 1205-000-019 | 3/4" NPT RH | | | | | | | | |
| | 1205-000-020 | 3/4" NPT LH | | | | | | | | |
| | 1205-000-039 | 3/4"-16 UNF RH | | | | | | | | |
| | 1205-000-025 | 3/4"-16 UNF LH | | | | | | | | |
| | 1205-000-001 | 1"-14 UNS RH | | | | | | | | |
| | 1205-000-002 | 1"-14 UNS LH | | | | | | | | |
| | 1205-000-012 | G 1/2" (BSP) RH | | | | | | | | |
| | 1205-000-013 | G 1/2" (BSP) LH | | | | | | | | |
| | 1205-000-021 | G 3/4" (BSP) RH | | | | | | | | |
| | 1205-000-022 | G 3/4" (BSP) LH | | | | | | | | |
| 1/2" | 2200-000-096 | 1/2" NPT RH | 2 7/8" | 4 15/16" | 1 7/16" | 7/8" | 1/2" | 1 1/4" | 3 3/4" | 3# |
| | 2200-000-097 | 1/2" NPT LH | | | | | | | | |
| | 2200-000-098 | 3/4" NPT RH | | | | | | | | |
| | 2200-000-099 | 3/4" NPT LH | | | | | | | | |
| | 2200-000-003 | 1"-14 UNS RH | | | | | | | | |
| | 2200-000-027 | 1"-14 UNS LH | | | | | | | | |
| | 2200-000-102 | G 3/4" (BSP) RH | | | | | | | | |
| | 2200-000-103 | G 3/4" (BSP) LH | | | | | | | | |