

Handles single & multi-plane swivel movement with positive sealing. Available in 1" through 6" sizes.

BULLETIN 3000A

Special design features :

- **Two rows of widely spaced bearings support heavier loads.**
- **Three-piece design simplifies repair.**
- **Spring energized seals offer leak-tight sealing at all pressures, including vacuum.**
- **Seal can be replaced without removing bearings.**
- **Available in three seal materials that are compatible with many gasses, fluids & chemicals.**



DEUBLIN Plane Swivel Joints provide 360° movement between piping elements in one or more planes for conveying or transferring a wide range of fluids including oils, water, air, gasses and chemicals.

Available in three types: threaded, welded and flanged to suit your application.

Simple design permits ready installation and fast easy maintenance.

Easy numbering system

BD-5241 0 - 16 - 01

-01	Buna-N Seal	-40°F to +225°F	(-40°C to +107°C)
-02	Teflon® Seal	-20°F to +325°F	(-30°C to +162°C)
-06	Viton Seal	-20°F to +300°F	(-30°C to +150°C)

Size Code	16	24	32	48	64	66
= in inches	1"	1-1/2"	2"	3"	4"	6"
= millimeters	25,4	38,1	50,8	76,2	101,6	152,4

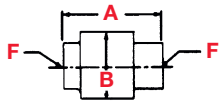
0	Carbon steel
1	Stainless steel (special orders only)

Style of connection and angles

Engineered for Performance

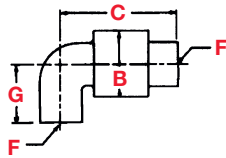
Plane Swivel Joints

DEUBLIN supplies several different styles and sizes to suit your particular application.



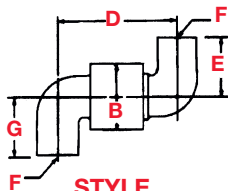
STYLE

Welded end BD-5141
Threaded end BD-5241



STYLE

Welded end BD-5142
Threaded end BD-5242



STYLE

Welded end BD-5143
Threaded end BD-5243

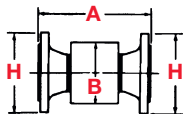
WELDED END STYLE (available in 3" thru 6")

JOINT SIZE	SIZE CODE	A	B	C	D	E	Maximum cold working Pressure psi (Kg/cm ²)
3" 75mm	48	12.88" (327)	5.50" (140)	11.95" (304)	10.88" (276)	3.00" (76)	1000 (70)
4" 100mm	64	13.22" (336)	7.00" (178)	13.22" (336)	13.22" (336)	4.00" (102)	1000 (70)
6" 150mm	66	16.75" (425)	9.00" (229)	18.75" (476)	20.75" (527)	6.00" (152)	750 (53)

THREADED END STYLE (available in 1" - 3")

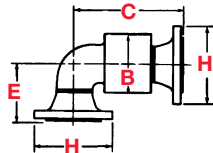
JOINT SIZE	SIZE CODE	A	B	C	D	E	G	* PIPE THREAD F	Maximum cold working Pressure psi (Kg/cm ²)
1" 25mm	16	4.19" (106)	2.50" (64)	4.38" (111)	4.59" (117)	2.50" (64)	2.50" (64)	1" NPT	1250 (88)
1-1/2" 40mm	24	4.62" (117)	3.25" (83)	5.06" (128)	5.50" (140)	3.25" (83)	3.25" (83)	1-1/2" NPT	1000 (70)
2" 50mm	32	5.88" (149)	4.00" (102)	6.81" (173)	7.50" (191)	3.50" (89)	3.69" (94)	2" NPT	1000 (70)
3" 75mm	48	6.88" (175)	5.62" (143)	7.25" (184)	8.40" (213)	4.69" (119)	4.69" (119)	3" NPT	1000 (70)

* also available in BSPT threads



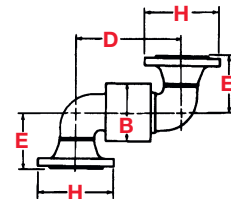
STYLE

BD-5341



STYLE

BD-5342



STYLE

BD-5343

FLANGED END STYLE (available in 3" thru 6")

JOINT SIZE	SIZE CODE	A	B	C	D	E	H	Maximum cold working Pressure psi (Kg/cm ²)
3" 75mm	48	10.38" (264)	5.50" (140)	10.70" (272)	10.95" (278)	5.75" (146)	7.50" (191)	275 (19)
4" 100mm	64	11.22" (285)	7.00" (178)	12.47" (318)	13.22" (336)	7.12" (181)	9.00" (229)	275 (19)
6" 150mm	66	15.75" (400)	9.00" (229)	18.75" (476)	20.75" (527)	9.50" (241)	11.00" (279)	275 (19)

Supplied with ANSI 150 lb.
Flange pressure temperature
ratings for over +100 °F (37.5 °C)
Special flanges available.
Contact DEUBLIN



信德迈科技(北京)有限公司 CNMEC Technology Company
北京朝阳区望京街10号望京SOHO-T1-C座2115室 邮编: 100102

电话: 010-8428 2935, 8428 9077, 8428 3983

Http: //www.cnmec.net

E-mail: sales@cnmec.biz

传真: 010-8428 8762