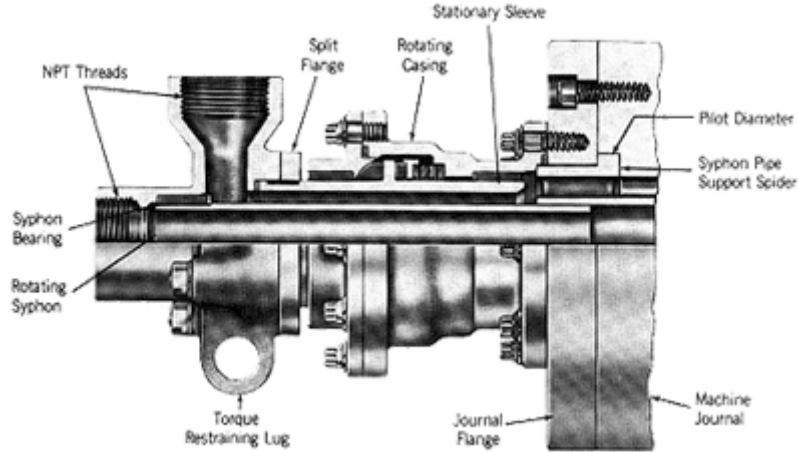


## Series 300

The BARCO Series 300 Rotary Joint was designed in cooperation with leading manufacturers of rubber and plastic calenders to handle circulating steam, hot water, and heat transfer fluids at the following temperatures and pressures:

- Steam 406°F(+208°C) 250 psi
- Water 350°F(+177°C) 300 psi
- Heat Transfer Fluids 600°F(+316°C) 150 psi
- Available in sizes 1 1/2" x 1 1/2", 2" x 2", 2 1/2" x 2 1/2"



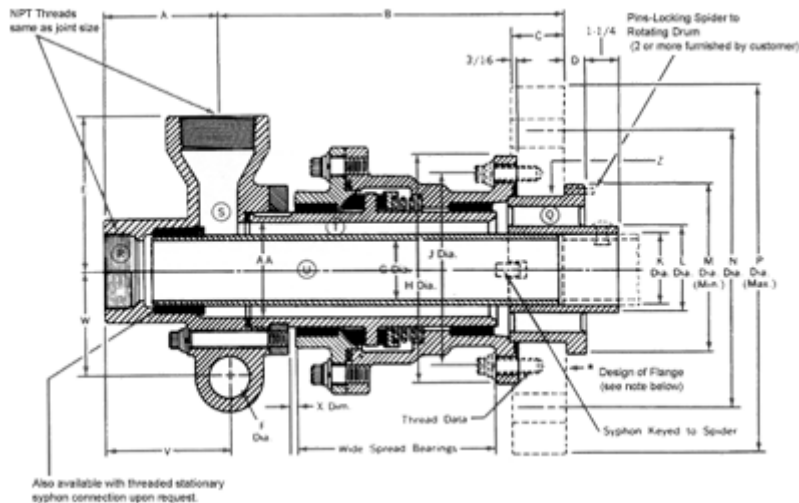
The Series 300 Rotary Joint has the following special features:

- No external supports required, because the heaviest part of the joint is supported by and rotates with the roll.
- Carefully designed for equal flow in outlet and inlet passages - minimum pressure drop due to balanced flow.
- Syphon support spider and short syphon tube, allowing accurate alignment of syphon and easy installation, supplied as standard.
- Same long-lived seal under compression and wide spaced bearings as other BARCO joints.

### Assembly Part Numbers

Joint Size	Rotary Syphon	Flanges Added	Hot Oil w/rotary syphon	Stationary Syphon	Flanges Added	Hot Oil w/stationary syphon
1 1/2" x 1 1/2"	10-54133	10-54488	10-54457	10-54459	10-54489	10-54458
2" x 2"	10-54100	10-54481	10-54460	10-54490	10-54485	10-54461
2 1/2" x 2 1/2"	10-54134	10-54482	10-54463	10-54465	10-54486	10-54464

**Note:** Part numbers shown are for unmatched pilot diameters. For pilot diameters machined to specific dimensions consult factory.



Joint Size	Working Pressure (psi)		Pipe Threads*							AA Pipe ID
	Type C Basic Ass'y No.	Type CS Basic Ass'y No.	Joint Trim	Cold	Saturated Steam	A&B	C	D Syphon Thd. Integral	D Syphon Thd. w /Bush.†	
1/2"	BC54000	BC54100	Ferrous	500	250					
	BC54065	BC54165	Bronze	300	125	1/2"	1/4"	1/8"	-	.50
3/4"	BC54000	BC54100	Ferrous	500	250					
	BC54065	BC54165	Bronze	300	125	3/4"	1/2"	1/4"	1/8"	.75 .69
1"	BC54000	BC54100	Ferrous	500	250					
	BC54065	BC54165	Bronze	300	125	1"	1/2"	3/8"	1/4"	1.00 .94
1-1/4"	BC54000	BC54100	Ferrous	500	250					
	BC54065	BC54165	Bronze	300	125	1-1/4"	3/4"	1/2"	3/8"	1.25
1-1/2"	BC54000	BC54100	Ferrous	500	250					
	BC54065	BC54165	Bronze	300	125	1-1/2"	3/4"	3/4"	1/2"	1.50
2"	BC54000	BC54100	Ferrous	400	225					
	BC54065	BC54165	Bronze	300	125	2"	1-1/4"	3/4"	1/2"	1.88 1.81
2-1/2"	BC54000	BC54100	Ferrous	400	225					
	BC54065	BC54165	Bronze	300	125	2-1/2"	1-1/4"	1"	3/4"	2.38 2.18
3"	BC54000	BC54100	Ferrous	400	225					
	BC54065	BC54165	Bronze	300	125	3"	1-1/2"	1-1/2"	1"	2.88 2.86

Joint Size	Torque								Q Hole Size	Torque Rod OD max	R	S Conn			T	X	Weight lbs
	E	G	H	J	K	L(C)	N	P				R	T	X			
1/2"	3.00	5.37	1.62	1.73	4.56	5.87	1.16	2.41	.50†	.38	4.81	1/4	2.00	.19		3 1/2	
3/4"	3.38	5.19	1.75	1.73	4.56	6.19	1.25	2.41	.50†	.38	4.87	1/4	2.19	.19		5	
1"	3.62	5.96	2.06	2.08	5.21	7.03	1.25	4.04	.50	.38	5.65	1/2	2.31	.25		6	
1-1/4"	4.38	7.01	2.19	1.96	6.70	8.62	1.78	4.40	.62	.50	6.63	3/4	2.88	.25		13	
1-1/2"	4.75	7.50	2.44	2.20	7.06	9.06	2.06	4.75	.62	.50	7.00	3/4	3.00	.25		15	
2"	6.00	8.65	2.75	2.29	8.09	10.65	2.56	5.03	.62	.50	8.09	1-1/4	2.75	.31		26	
2-1/2"	6.75	10.15	3.00	2.99	9.76	12.45	2.50	6.33	.75	.62	9.58	1-1/4	3.06	.25		33	
3"	7.88	10.88	3.62	3.14	10.69	13.06	2.88	6.62	.94	.75	10.37	1-1/2	3.62	.25		45	

For Syphon Use...

† All joints equipped for use with syphon pipe are furnished with "D" connection for large size syphon - a bushing is shipped with each joint, 1" through 3" sizes for reducing the "D" connection for small size syphon if required. Installation instructions are included with each bushing. Syphon pipes are not included.

\* Joints also available with JIS and/or BSP threads on sleeve.

All dimensions in inches.

### Bronze Trim Construction

Bronze sleeve and end cap, with iron casting for water, brine, and low pressure steam are available.

### Ferrous Trim Construction

Recommended for higher pressure steam to 250 psi (17.5 Kg/cm<sup>2</sup>) and hot oil service.

### Preventive Maintenance

By measuring dimension 'X' ( from step on sleeve to end of cap) and referring to the dimension table, visual inspection periodically can determine when seals should be replaced.

### Important

For cooling applications on rubber calender and mill service:

The supply line should be installed in the smaller rotary joint port with the return or discharge line installed in the larger port. This is necessary to maintain proper temperature conditions.

## Distributed By:

信德迈科技(北京)有限公司

CNMEC Technology

北京市朝阳区望京SOHO塔1C座2115室

电话 : 010-8428 2935

手机 : 139 1096 2635

E-mail : sales@cnmec.biz