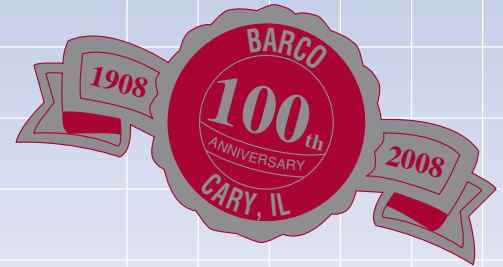


BARCO SERIES TYPE "C" & "CF"

Steam Duo-flow Fixed Syphon



BC-54000 SERIES

Special Design Features

- **Two widely spaced Carbon Bearings provides greater support to the syphon pipe and hoses.**
- **Carbon Seal placed under compression add strength and shock resistance. Joints lasts longer.**
- **External seal wear indicator allows for planned maintenance reducing expensive downtime.**
- **Hardened sleeve and nickel plated end cap provide exceptional life at high pressure.**



Sizes 1/2" to 3"

Type "C" Ferrous Trim Rotary Joints are ideal for a wide range of applications using steam. These joints feature an iron casing, ferrous sleeve and end cap, stainless steel spring and spring guides.

The high density carbon seal under compression and widely spaced bearing surfaces assure exceptionally long service life without lubrication. A key maintenance feature is the external seal wear indicator.

Operating Parameters:

| | |
|----------------------|--------------------|
| Temperature: | +406°F (+208°C) |
| Pressure Rating: | |
| Sizes 1/2" to 1-1/2" | 250 psi (17.2 BAR) |
| Sizes 2" to 3" | 225 psi (15.5 BAR) |

TYPE "C" & "CF"



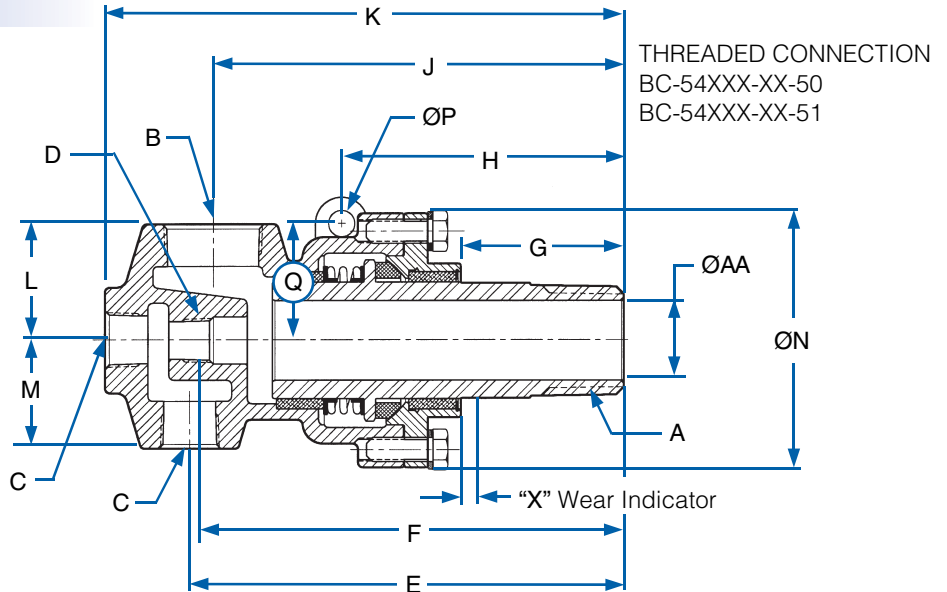
Ferrous Trim Construction
Recommended for higher pressure steam to 250 psi (17.2 BAR)

For BSPT threads:

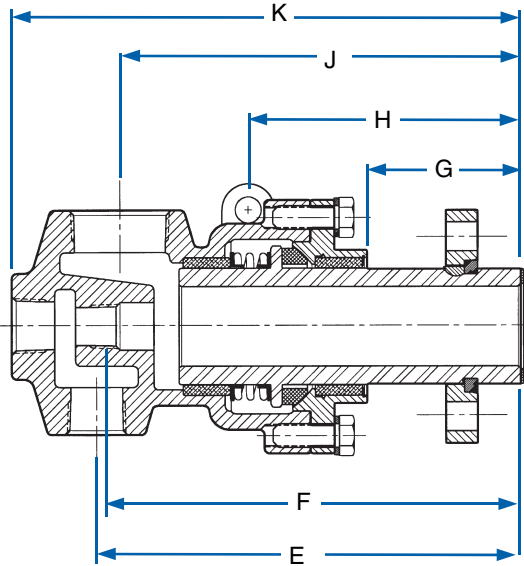
Add a "B" to the end of the part number.

Example: BC-54000-08-50B

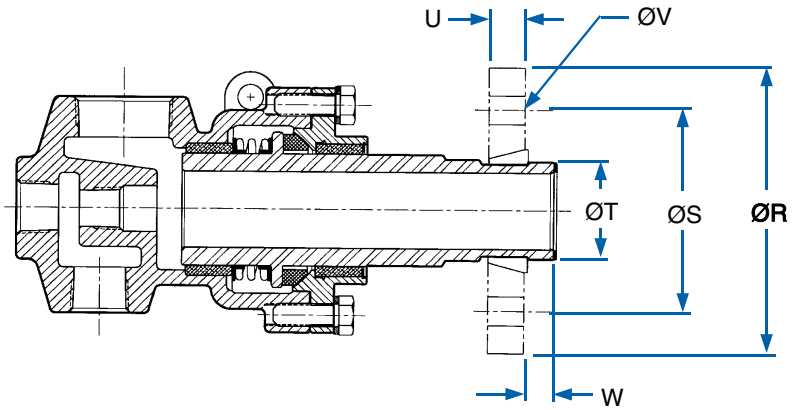
*BSPT Models are not supplied with syphon bushing



| Joint Size | Ferrous Trim Part Number | A NPT | B NPT | øAA | C NPT | D Syphon Thread NPT | D Syphon Thd With Bushing* | E | F | G | H | J | K |
|------------|--------------------------|-------------|--------|--------|--------|---------------------|----------------------------|--------|--------|-------|-------|--------|--------|
| 1/2" | BC-54000-08-50 | 1/2" R.H. | 1/2" | Ø.50" | 1/4" | 1/8" | — | 5.37" | 5.06" | 1.73" | — | 4.54" | 5.87" |
| | BC-54000-08-51 | 1/2" L.H. | 1/2" | Ø.50" | 1/4" | 1/8" | — | 5.37" | 5.06" | 1.73" | — | 4.54" | 5.87" |
| 3/4" | BC-54000-12-50 | 3/4" R.H. | 3/4" | Ø.75" | 1/2" | 1/4" | 1/8" | 5.16" | 5.25" | 1.68" | — | 4.54" | 6.17" |
| | BC-54000-12-51 | 3/4" L.H. | 3/4" | Ø.75" | 1/2" | 1/4" | 1/8" | 5.16" | 5.25" | 1.68" | — | 4.54" | 6.17" |
| 1" | BC-54000-16-50 | 1" R.H. | 1" | Ø1.00" | 1/2" | 3/8" | 1/4" | 5.96" | 6.04" | 2.03" | 4.01" | 5.21" | 7.01" |
| | BC-54000-16-51 | 1" L.H. | 1" | Ø1.00" | 1/2" | 3/8" | 1/4" | 5.96" | 6.04" | 2.03" | 4.01" | 5.21" | 7.01" |
| | BC-54000-16-60 | CF | 1" | Ø1.00" | 1/2" | 3/8" | 1/4" | 6.69" | 6.78" | 2.77" | 4.75" | 5.94" | 7.75" |
| | BC-54000-16-62 | QR | 1" | Ø1.00" | 1/2" | 3/8" | 1/4" | 6.70" | 6.79" | 2.78" | 4.76" | 5.95" | 7.76" |
| 1 1/4" | BC-54000-20-50 | 1 1/4" R.H. | 1 1/4" | Ø1.25" | 3/4" | 1/2" | 3/8" | 6.99" | 7.25" | 1.89" | 4.37" | 6.68" | 8.60" |
| | BC-54000-20-51 | 1 1/4" L.H. | 1 1/4" | Ø1.25" | 3/4" | 1/2" | 3/8" | 6.99" | 7.25" | 1.89" | 4.37" | 6.68" | 8.60" |
| | BC-54000-20-62 | QR | 1 1/4" | Ø1.25" | 3/4" | 1/2" | 3/8" | 8.55" | 8.81" | 3.45" | 5.93" | 8.24" | 10.16" |
| 1 1/2" | BC-54000-24-50 | 1 1/2" R.H. | 1 1/2" | Ø1.50" | 3/4" | 3/4" | 1/2" | 7.48" | 7.53" | 2.12" | 4.72" | 7.04" | 9.03" |
| | BC-54000-24-51 | 1 1/2" L.H. | 1 1/2" | Ø1.50" | 3/4" | 3/4" | 1/2" | 7.48" | 7.53" | 2.12" | 4.72" | 7.04" | 9.03" |
| | BC-54000-24-60 | CF | 1 1/2" | Ø1.50" | 3/4" | 3/4" | 1/2" | 8.89" | 8.94" | 3.53" | 6.13" | 8.45" | 10.45" |
| | BC-54000-24-62 | QR | 1 1/2" | Ø1.50" | 3/4" | 3/4" | 1/2" | 8.89" | 8.94" | 3.53" | 6.13" | 8.45" | 10.45" |
| 2" | BC-54000-32-50 | 2" R.H. | 2" | Ø1.88" | 1 1/4" | 3/4" | 1/2" | 8.62" | 8.62" | 2.19" | 5.01" | 8.06" | 10.63" |
| | BC-54000-32-51 | 2" L.H. | 2" | Ø1.88" | 1 1/4" | 3/4" | 1/2" | 8.62" | 8.62" | 2.19" | 5.01" | 8.06" | 10.63" |
| | BC-54000-32-60 | CF | 2" | Ø1.88" | 1 1/4" | 3/4" | 1/2" | 10.09" | 10.08" | 3.66" | 6.48" | 9.53" | 12.10" |
| | BC-54000-32-62 | QR | 2" | Ø1.88" | 1 1/4" | 3/4" | 1/2" | 9.71" | 9.71" | 3.28" | 6.10" | 9.15" | 11.72" |
| 2 1/2" | BC-54000-40-50 | 2 1/2" R.H. | 2 1/2" | Ø2.25" | 1 1/4" | 1" | 3/4" | 10.14" | 10.24" | 2.91" | 6.33" | 9.76" | 12.45" |
| | BC-54000-40-51 | 2 1/2" L.H. | 2 1/2" | Ø2.25" | 1 1/4" | 1" | 3/4" | 10.14" | 10.24" | 2.91" | 6.33" | 9.76" | 12.45" |
| | BC-54000-40-60 | CF | 2 1/2" | Ø2.25" | 1 1/4" | 1" | 3/4" | 10.09" | 10.56" | 3.66" | 6.48" | 9.53" | 12.10" |
| | BC-54000-40-62 | QR | 2 1/2" | Ø2.25" | 1 1/4" | 1" | 3/4" | 10.77" | 10.86" | 3.54" | 6.96" | 10.39" | 13.08" |
| 3" | BC-54000-48-50 | 3" R.H. | 3" | Ø2.88" | 1 1/2" | 1 1/2" | 1" | 10.86" | 11.03" | 3.05" | 6.60" | 10.67" | 13.04" |
| | BC-54000-48-51 | 3" L.H. | 3" | Ø2.88" | 1 1/2" | 1 1/2" | 1" | 10.86" | 11.03" | 3.05" | 6.60" | 10.67" | 13.04" |
| | BC-54000-48-60 | CF | 3" | Ø2.88" | 1 1/2" | 1 1/2" | 1" | 11.35" | 11.53" | 3.55" | 7.10" | 11.16" | 13.53" |
| | BC-54000-48-62 | QR | 3" | Ø2.88" | 1 1/2" | 1 1/2" | 1" | 11.36" | 11.53" | 3.55" | 7.10" | 11.16" | 13.54" |



“CF” CONNECTION
BC-54XXX-XX-60

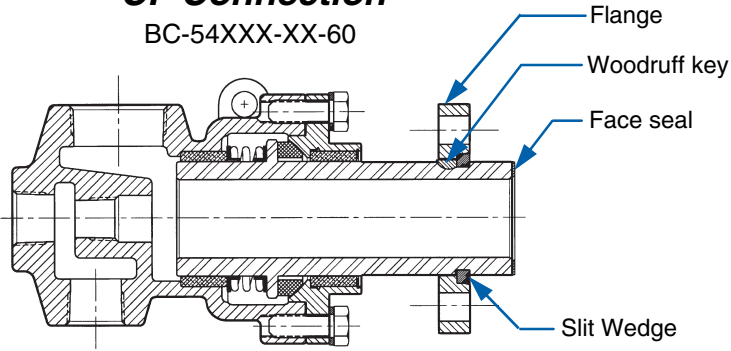


QUICK RELEASE CONNECTION
BC-54XXX-XX-62

| L | M | ØN | ØP | Torque Rod O.D. Max. | Q | ØR | ØS | ØT | U | 4X ØV | W | “X” | Weight | Joint Size |
|-------|-------|--------|-------|----------------------|-------|--------|--------|----------------|------|-------|--------|------|---------|------------|
| 1.62" | 1.16" | Ø3.00" | — | — | — | — | — | — | — | — | — | .19" | 3.5 lbs | 1/2" |
| 1.62" | 1.16" | Ø3.00" | — | — | — | — | — | — | — | — | — | .19" | 3.5 lbs | |
| 1.75" | 1.25" | Ø3.38" | — | — | — | — | — | — | — | — | — | .19" | 5 lbs. | 3/4" |
| 1.75" | 1.25" | Ø3.38" | — | — | — | — | — | — | — | — | — | .19" | 5 lbs. | |
| 2.06" | 1.25" | Ø3.62" | Ø.50" | Ø.38" | 1.75" | — | — | — | — | — | — | .25" | 6 lbs. | 1" |
| 2.06" | 1.25" | Ø3.62" | Ø.50" | Ø.38" | 1.75" | — | — | — | — | — | — | .25" | 6 lbs. | |
| 2.06" | 1.25" | Ø3.62" | Ø.50" | Ø.38" | 1.75" | Ø3.88" | Ø2.75" | Ø1.399"-1.401" | .75" | Ø.56" | 1.092" | .25" | 9 lbs. | 1 1/4" |
| 2.06" | 1.25" | Ø3.62" | Ø.50" | Ø.38" | 1.75" | Ø5.00" | Ø3.12" | Ø1.276"-1.278" | .56" | Ø.56" | .438" | .25" | 9 lbs. | |
| 2.19" | 1.78" | Ø4.38" | Ø.62" | Ø.50" | 2.09" | — | — | — | — | — | — | .25" | 13 lbs | 1 1/4" |
| 2.19" | 1.78" | Ø4.38" | Ø.62" | Ø.50" | 2.09" | — | — | — | — | — | — | .25" | 13 lbs | |
| 2.19" | 1.78" | Ø4.38" | Ø.62" | Ø.50" | 2.09" | Ø5.50" | Ø3.50" | Ø1.620"-1.622" | .62" | Ø.56" | .50" | .25" | 18 lbs. | 1 1/2" |
| 2.44" | 2.06" | Ø4.75" | Ø.62" | Ø.50" | 2.26" | — | — | — | — | — | — | .25" | 15 lbs | |
| 2.44" | 2.06" | Ø4.75" | Ø.62" | Ø.50" | 2.26" | — | — | — | — | — | — | .25" | 15 lbs | 1 1/2" |
| 2.44" | 2.06" | Ø4.75" | Ø.62" | Ø.50" | 2.26" | Ø4.88" | Ø3.62" | Ø2.091"-2.093" | .75" | Ø.69" | 1.092" | .25" | 19 lbs | |
| 2.44" | 2.06" | Ø4.75" | Ø.62" | Ø.50" | 2.26" | Ø5.50" | Ø3.88" | Ø1.872"-1.870" | .69" | Ø.56" | .50" | .25" | 19 lbs. | 2" |
| 2.75" | 2.56" | Ø6.00" | Ø.62" | Ø.50" | 2.76" | — | — | — | — | — | — | .31" | 26 lbs | |
| 2.75" | 2.56" | Ø6.00" | Ø.62" | Ø.50" | 2.76" | — | — | — | — | — | — | .31" | 26 lbs | 2" |
| 2.75" | 2.56" | Ø6.00" | Ø.62" | Ø.50" | 2.76" | Ø5.50" | Ø4.25" | Ø2.714"-2.716" | .75" | Ø.69" | 1.092" | .31" | 31 lbs | |
| 2.75" | 2.56" | Ø6.00" | Ø.62" | Ø.50" | 2.76" | Ø6.81" | Ø4.75" | Ø2.318"-2.320" | .75" | Ø.56" | .625" | .31" | 34 lbs. | 2 1/2" |
| 3.00" | 2.50" | Ø6.75" | Ø.75" | Ø.62" | 3.06" | — | — | — | — | — | — | .25" | 33 lbs. | |
| 3.00" | 2.50" | Ø6.75" | Ø.75" | Ø.62" | 3.06" | — | — | — | — | — | — | .25" | 33 lbs. | 2 1/2" |
| 3.00" | 2.50" | Ø6.75" | Ø.75" | Ø.62" | 3.06" | Ø5.88" | Ø4.62" | Ø3.089"-3.091" | .75" | Ø.75" | 1.092" | .25" | 40 lbs | |
| 3.00" | 2.50" | Ø6.75" | Ø.75" | Ø.62" | 3.06" | Ø6.75" | Ø4.75" | Ø2.838"-2.840" | .88" | Ø.56" | .75" | .25" | 42 lbs. | 3" |
| 3.62" | 2.88" | Ø7.88" | Ø.94" | Ø.75" | 3.62" | — | — | — | — | — | — | .25" | 45 lbs. | |
| 3.62" | 2.88" | Ø7.88" | Ø.94" | Ø.75" | 3.62" | — | — | — | — | — | — | .25" | 45 lbs. | 3" |
| 3.62" | 2.88" | Ø7.88" | Ø.94" | Ø.75" | 3.62" | Ø6.50" | Ø5.25" | Ø3.714"-3.716" | .75" | Ø.69" | 1.092" | .25" | 50 lbs | |
| 3.62" | 2.88" | Ø7.88" | Ø.94" | Ø.75" | 3.62" | Ø8.00" | Ø6.75" | Ø3.430"-3.732" | .94" | Ø.69" | .88" | .25" | 57 lbs. | |

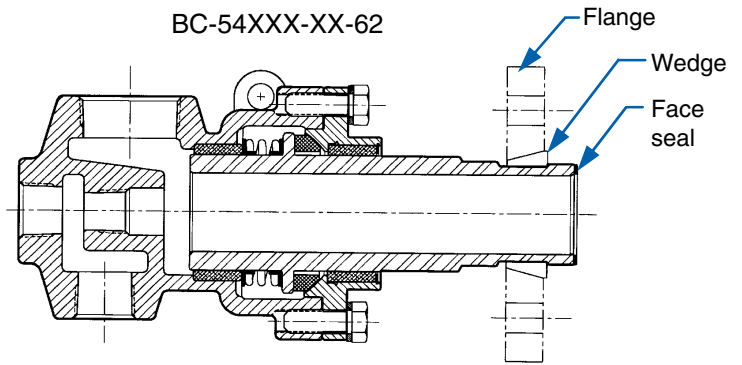
CF Connection

BC-54XXX-XX-60



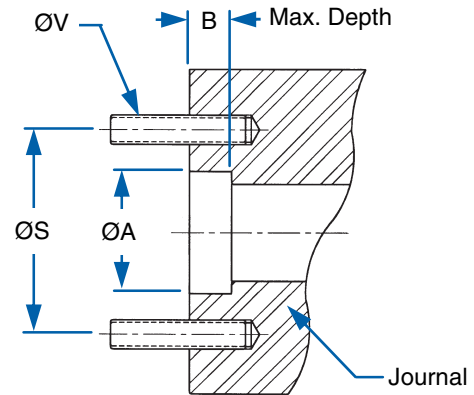
Quick Release Connection

BC-54XXX-XX-62



Journal Dimensions

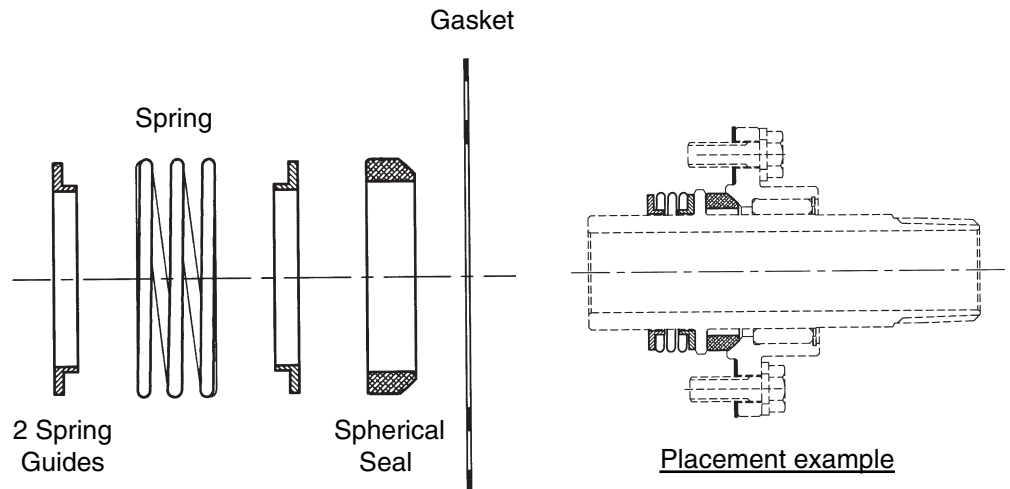
| Joint size | CF Connection | | Quick Release Connection | |
|------------|----------------|--------|--------------------------|-------|
| | ØA | B | ØA | B |
| 1" | Ø1.408"-1.406" | 1.052" | Ø1.283"-1.279" | .312" |
| 1 1/4" | — | 1.052" | Ø1.624"-1.623" | .375" |
| 1 1/2" | Ø2.099"-2.096" | 1.052" | Ø1.877"-1.873" | .375" |
| 2" | Ø2.724"-2.721" | 1.052" | Ø2.325"-2.321" | .500" |
| 2 1/2" | Ø3.099"-3.096" | 1.052" | Ø2.845"-2.841" | .625" |
| 3" | Ø3.724"-3.721" | 1.052" | Ø3.439"-3.435" | .875" |



Quick Release Flanges and split wedges are available. Contact Barco for more information.

Repair Kits

| Joint Size | Part Number |
|------------|-------------|
| 1/2" | 10-27274-00 |
| 3/4" | 10-27275-00 |
| 1" | 10-27276-00 |
| 1 1/4" | 10-27277-00 |
| 1 1/2" | 10-27278-00 |
| 2" | 10-27279-00 |
| 2 1/2" | 10-27280-00 |
| 3" | 10-27281-00 |



信德迈科技(北京)有限公司CNMEC Technology
 地址：北京市朝阳区望京SOHO-T1-C座2115室
 邮编：100029
 电话：010-8428 2935，8428 3983
 传真：010-8428 8762
 主页：[//www.cnmec.net](http://www.cnmec.net)
 电子邮件：sales@cnmec.biz