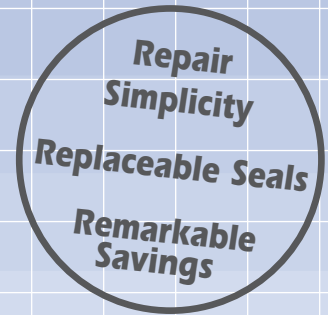


BARCO SERIES **E-75 RS PLUS**

# Water Rotary Unions



## Special Design Features

- **Dry run capability.**
- **Silicon carbide to carbon graphite mechanical seals.**
- **For abrasive applications, the E-75 RSX with silicon carbide to siliconized graphite mechanical seals is available.**
- **Available in Mono-Flow and Duo-Flow configurations.**
- **Seals are user replaceable.**
- **Sizes from 3/8" to 2".**
- **Available in U.S. and metric thread specifications.**



The Barco E-75 RS *Plus!* Rotary Union incorporates state-of-the-art sealing technology for use on water applications. This product is primarily used in the printing, paper, rubber, plastics and steel processing industries.

Operating Data	
<b>Max. Pressure</b>	150 PSI      10.3 BAR
<b>Temperature</b>	300°F      149°C
<i>For higher temperature fluids, contact Barco Engineering.</i>	
<b>Max. Speed</b>	
3/8" - 3,500 RPM	1 1/4" - 2,500 RPM
1/2" - 3,500 RPM	1 1/2" - 2,500 RPM
3/4" - 3,500 RPM	2" - 750 RPM
1" - 3,000 RPM	

## Mono-Flow Unions

E-75 RS Silicon carbide to carbon graphite mechanical seals.

Union Size	E-75 RS Part Number	Thread "A"	B	ØC	D	E	ØF	L	"P" NPT	"R" NPT
3/8"	BC-32000-06-01	5/8" - 18 UNF (R.H.)	.50"	.38"	3.30"	.91"	1.81"	3.98"	3/8"	1/4"
	BC-32001-06-01	5/8" - 18 UNF (L.H.)	(12.7)	(9.6)	(84)	(23)	(46)	(101)		
	BC-32002-06-01	3/8" - 18 NPT (R.H.)	.56"	.38"	3.30"	.91"	1.81"	3.98"		
	BC-32003-06-01	3/8" - 18 NPT (L.H.)	(14.2)	(9.6)	(84)	(23)	(46)	(101)		
	BC-32100-06-01	G 3/8" BSPP (R.H.)	.56"	.38"	3.30"	.91"	1.81"	3.98"		
	BC-32101-06-01	G 3/8" BSPP (L.H.)	(14.2)	(9.6)	(84)	(23)	(46)	(101)		
1/2"	BC-32000-08-01	3/4" - 16 UNF (R.H.)	.69"	.50"	3.90"	1.12"	2.23"	4.69"	1/2"	3/8"
	BC-32001-08-01	3/4" - 16 UNF (L.H.)	(17.5)	(12.7)	(99)	(28)	(57)	(119)		
	BC-32002-08-01	1/2" NPT (R.H.)	1.00"	.50"	4.19"	1.12"	2.23"	4.98"		
	BC-32003-08-01	1/2" NPT (L.H.)	(25.4)	(12.7)	(106)	(28)	(57)	(126)		
	BC-32100-08-01	G 1/2" BSPP (R.H.)	.75"	.50"	3.96"	1.12"	2.23"	4.75"		
	BC-32101-08-01	G 1/2" BSPP (L.H.)	(19.1)	(12.7)	(101)	(28)	(57)	(121)		
	BC-32162-08-01	M22 X 1.5 (R.H.)	.62"	.50"	3.83"	1.12"	2.23"	4.62"		
BC-32163-08-01	M22 X 1.5 (L.H.)	(15.7)	(12.7)	(97)	(28)	(57)	(117)			
3/4"	BC-32000-12-01	1" - 14 UNS (R.H.)	.69"	.66"	4.44"	1.27"	2.60"	5.44"	3/4"	1/2"
	BC-32001-12-01	1" - 14 UNS (L.H.)	(17.5)	(16.7)	(113)	(32)	(66)	(138)		
	BC-32002-12-01	3/4" NPT (R.H.)	1.00"	.66"	4.75"	1.27"	2.60"	5.75"		
	BC-32003-12-01	3/4" NPT (L.H.)	(25.4)	(16.7)	(121)	(32)	(66)	(146)		
	BC-32100-12-01	G 3/4" BSPP (R.H.)	.75"	.66"	4.50"	1.27"	2.60"	5.50"		
	BC-32101-12-01	G 3/4" BSPP (L.H.)	(19.1)	(16.7)	(114)	(32)	(66)	(140)		
	BC-32162-12-01	M35 X 1.5 (R.H.)	.62"	.66"	5.01"	1.27"	2.60"	6.01"		
BC-32163-12-01	M35 X 1.5 (L.H.)	(15.7)	(16.7)	(127)	(32)	(66)	(152)			
1"	BC-32025-16-01	1" NPT (R.H.)	1.12"	1.00"	5.46"	1.60"	3.25"	6.87"	1"	3/4"
	BC-32026-16-01	1" NPT (L.H.)	(28.4)	(25.4)	(139)	(41)	(82)	(174)		
	BC-32034-16-01	1 1/2" - 12 UNF (R.H.)	1.12"	1.00"	5.46"	1.60"	3.25"	6.87"		
	BC-32035-16-01	1 1/2" - 12 UNF (L.H.)	(28.4)	(25.4)	(139)	(41)	(82)	(174)		
	BC-32100-16-01	G 1" BSPP (R.H.)	.87"	.88"	5.46"	1.60"	3.25"	6.87"		
	BC-32101-16-01	G 1" BSPP (L.H.)	(22.1)	(22)	(139)	(41)	(82)	(174)		
	BC-32162-16-01	M35 X 1.5 (R.H.)	1.12"	1.00"	5.46"	1.60"	3.25"	6.87"		
	BC-32163-16-01	M35 X 1.5 (L.H.)	(28.4)	(25.4)	(139)	(41)	(82)	(174)		
1 1/4"	BC-32000-20-01	1 3/4" - 12 UN (R.H.)	1.13"	1.25"	6.01"	1.76"	3.56"	7.67"	1 1/4"	1"
	BC-32001-20-01	1 3/4" - 12 UN (L.H.)	(28.7)	(31.7)	(153)	(45)	(90)	(195)		
	BC-32002-20-01	1 1/4" NPT (R.H.)	1.13"	1.25"	6.01"	1.76"	3.56"	7.67"		
	BC-32003-20-01	1 1/4" NPT (L.H.)	(28.7)	(31.7)	(153)	(45)	(90)	(195)		
	BC-32100-20-01	G 1 1/4" BSPP (R.H.)	1.13"	1.25"	6.01"	1.76"	3.56"	7.67"		
	BC-32101-20-01	G 1 1/4" BSPP (L.H.)	(28.7)	(31.7)	(153)	(45)	(90)	(195)		
1 1/2"	BC-32000-24-01	2" - 12 UN (R.H.)	1.06"	1.50"	6.48"	1.82"	3.64"	8.01"	1 1/2"	1 1/4"
	BC-32001-24-01	2" - 12 UN (L.H.)	(26.9)	(38.1)	(164)	(46)	(92)	(203)		
	BC-32002-24-01	1 1/2" NPT (R.H.)	1.13"	1.50"	6.54"	1.82"	3.64"	8.07"		
	BC-32003-24-01	1 1/2" NPT (L.H.)	(28.7)	(38.1)	(166)	(46)	(92)	(205)		
	BC-32100-24-01	G 1 1/2" BSPP (R.H.)	1.14"	1.38"	6.48"	1.82"	3.64"	8.01"		
	BC-32101-24-01	G 1 1/2" BSPP (L.H.)	(28.9)	(35.1)	(164)	(46)	(92)	(203)		
	BC-32172-24-01	M50 X 1.5 (R.H.)	.87"	1.50"	6.45"	1.82"	3.64"	7.96"		
BC-32173-24-01	M50 X 1.5 (L.H.)	(22.1)	(38.1)	(163)	(46)	(92)	(202)			
2"	BC-32002-32-01	2" NPT (R.H.)	1.19"	1.75"	7.66"	2.09"	4.04"	10.09"	2"	1 1/4"
	BC-32003-32-01	2" NPT (L.H.)	(30.2)	(44.4)	(195)	(53)	(103)	(256)		

Special threads available. Contact Barco.

## Duo-Flow NPT Stationary Syphon Unions

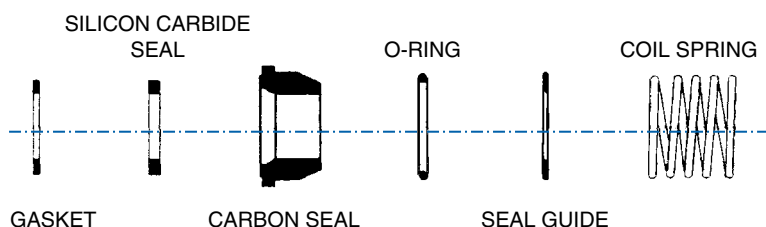
Elbows designed for maximum flow rate.

Several duo-flow elbow options are available. Refer to Bulletin INS 3100, or contact Barco for more information.

Union Size	E-75 RS Part Number	Thread "A"	B	ØC	D	E	ØF	G Approx.	"P" NPT	"S" NPT	"T" NPT	"Y" Pipe Length Into Union
1/2"	BC-32004-08-01	3/4" - 16 UNF (R.H.)	.69"	.50"	3.90"	1.12"	2.23"	5.34"	1/2"	3/8"	1/8"	4.69"
	BC-32005-08-01	3/4" - 16 UNF (L.H.)	(17.5)	(12.7)	(99)	(28)	(57)	(136)				(119)
	BC-32006-08-01	1/2" NPT (R.H.)	1.00"	.50"	4.19"	1.12"	2.23"	5.57"				4.84"
	BC-32007-08-01	1/2" NPT (L.H.)	(25.4)	(12.7)	(106)	(28)	(57)	(141)				(123)
	BC-32098-08-01	G 1/2" BSPP (R.H.)	.75"	.50"	3.96"	1.12"	2.23"	5.40"				4.75"
BC-32099-08-01	G 1/2" BSPP (L.H.)	(19.1)	(12.7)	(101)	(28)	(57)	(137)	(121)				
3/4"	BC-32004-12-01	1" - 14 UNS (R.H.)	.69"	.66"	4.44"	1.27"	2.60"	6.29"	3/4"	1/2"	1/4"	5.30"
	BC-32005-12-01	1" - 14 UNS (L.H.)	(17.5)	(16.7)	(113)	(32)	(66)	(160)				(135)
	BC-32006-12-01	3/4" NPT (R.H.)	1.00"	.66"	4.75"	1.27"	2.60"	6.60"				5.61"
	BC-32007-12-01	3/4" NPT (L.H.)	(25.4)	(16.7)	(121)	(32)	(66)	(168)				(142)
	BC-32098-12-01	G 3/4" BSPP (R.H.)	.75"	.66"	4.50"	1.27"	2.60"	6.35"				5.36"
BC-32099-12-01	G 3/4" BSPP (L.H.)	(19.1)	(16.7)	(114)	(32)	(66)	(161)	(136)				
1"	BC-32032-16-01	1 1/2" - 12 UNF (R.H.)	1.12"	1.00"	5.46"	1.60"	3.25"	7.94"	1"	1/2"	3/8"	6.72"
	BC-32033-16-01	1 1/2" - 12 UNF (L.H.)	(28.4)	(25.4)	(139)	(41)	(82)	(202)				(171)
	BC-32027-16-01	1" NPT (R.H.)	1.12"	1.00"	5.46"	1.60"	3.25"	7.94"				6.72"
	BC-32028-16-01	1" NPT (L.H.)	(28.4)	(25.4)	(139)	(41)	(82)	(202)				(171)
	BC-32098-16-01	1" BSPP (R.H.)	.87"	1.00"	5.46"	1.60"	3.25"	7.94"				6.72"
BC-32099-16-01	1" BSPP (L.H.)	(22.1)	(25.4)	(139)	(41)	(82)	(202)	(171)				
1 1/4"	BC-32411-20-01	1 3/4" - 12 UN (R.H.)	1.13"	1.25"	6.00"	1.78"	3.56"	8.89"	1 1/4"	3/4"	1/2"	7.54"
	BC-32412-20-01	1 3/4" - 12 UN (L.H.)	(28.7)	(31.7)	(152)	(45)	(90)	(226)				(192)
	BC-32008-20-01	1 1/4" NPT (R.H.)	1.13"	1.25"	6.00"	1.78"	3.56"	8.88"				7.54"
	BC-32009-20-01	1 1/4" NPT (L.H.)	(28.7)	(31.7)	(152)	(45)	(90)	(225)				(192)
	BC-32496-20-01	G 1 1/4" BSPP (R.H.)	1.13"	1.25"	6.00"	1.78"	3.56"	8.88"				7.54"
BC-32497-20-01	G 1 1/4" BSPP (L.H.)	(28.7)	(31.7)	(152)	(45)	(90)	(225)	(192)				
1 1/2"	BC-32004-24-01	2" - 12 UN (R.H.)	1.06"	1.50"	6.48"	1.82"	3.64"	9.66"	1 1/2"	1"	3/4"	7.96"
	BC-32005-24-01	2" - 12 UN (L.H.)	(26.9)	(38.1)	(164)	(46)	(92)	(245)				(202)
	BC-32006-24-01	1 1/2" NPT (R.H.)	1.13"	1.50"	6.54"	1.82"	3.64"	9.72"				8.02"
	BC-32007-24-01	1 1/2" NPT (L.H.)	(28.7)	(38.1)	(166)	(46)	(92)	(247)				(204)
	BC-32098-24-01	G 1 1/2" BSPP (R.H.)	1.14"	1.38"	6.48"	1.82"	3.64"	9.66"				7.96"
BC-32099-24-01	G 1 1/2" BSPP (L.H.)	(28.9)	(35.1)	(164)	(46)	(92)	(245)	(202)				
2"	BC-32006-32-01	2" NPT (R.H.)	1.19"	1.75"	7.66"	2.31"	4.04"	11.52"	2"	1"	1"	9.98"
	BC-32007-32-01	2" NPT (L.H.)	(30.2)	(44.4)	(195)	(59)	(103)	(293)				(253)
	BC-32098-32-01	G 2" BSPP (R.H.)	1.14"	1.75"	7.66"	2.31"	4.04"	11.52"				9.98"
	BC-32099-32-01	G 2" BSPP (L.H.)	(28.9)	(44.4)	(195)	(59)	(103)	(293)				(253)

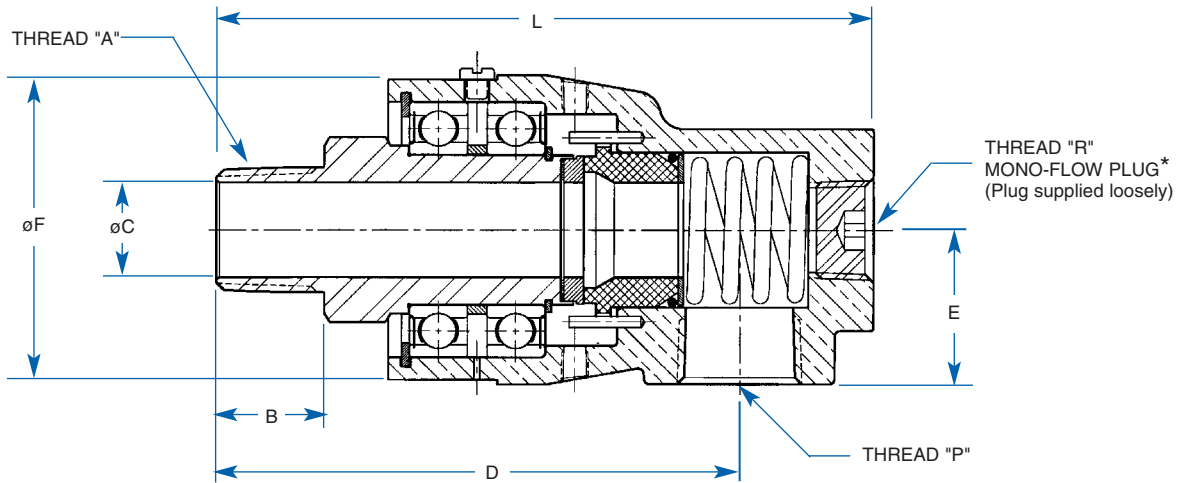
## Repair Kits for both Mono-Flow and Duo-Flow

Union size	Part number
3/8"	10-67175-XX
1/2"	10-67176-XX
3/4"	10-67177-XX
1"	10-67178-XX
1 1/4"	10-67625-XX
1 1/2"	10-67293-XX
2"	10-67294-XX



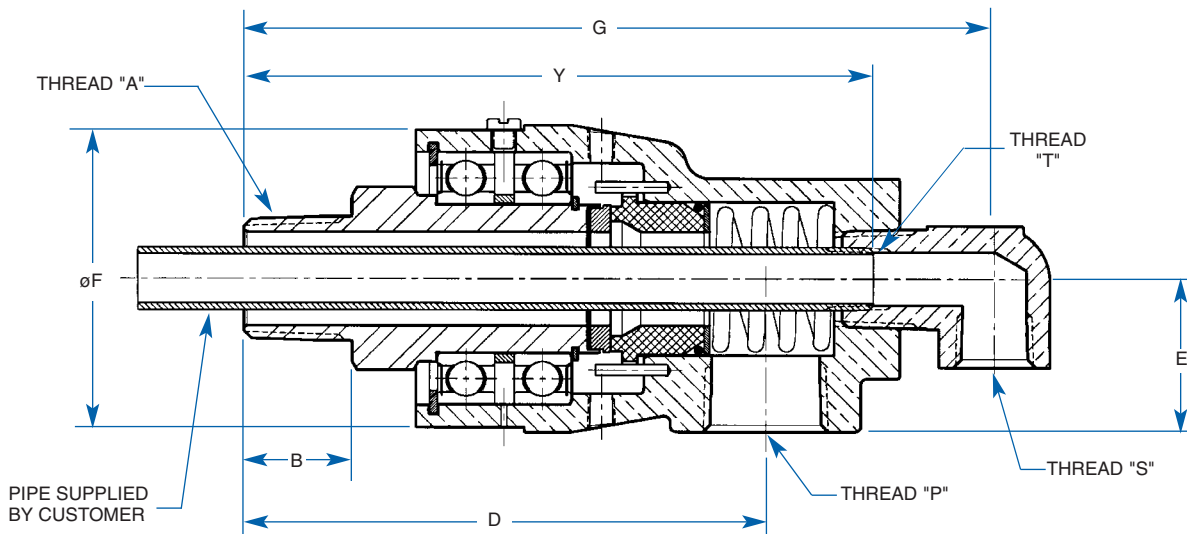
-XX Elastomer Suffix, Specify: -01 = HNBR (Standard), -04 = EPR (Special), -06 = Viton (Special).

## Mono-Flow Water Rotary Union



\*Seal & tighten plug, or install duo-flow elbow as required before use.

## Duo-Flow Water Rotary Union



**Barco**  
**International Headquarters**  
 1100 Alexander Court  
 Cary, IL 60013-1892  
 Phone: (847) 516-0900  
 Fax: (847) 516-5590



A DIVISION OF MARISON INDUSTRIES

### Distributed By:

信德迈科技(北京)有限公司  
 CNMEC Technology  
 北京市朝阳区望京SOHO塔1C座2115室  
 电话: 010-8428 2935  
 手机: 139 1096 2635  
 E-mail: sales@cnmec.biz